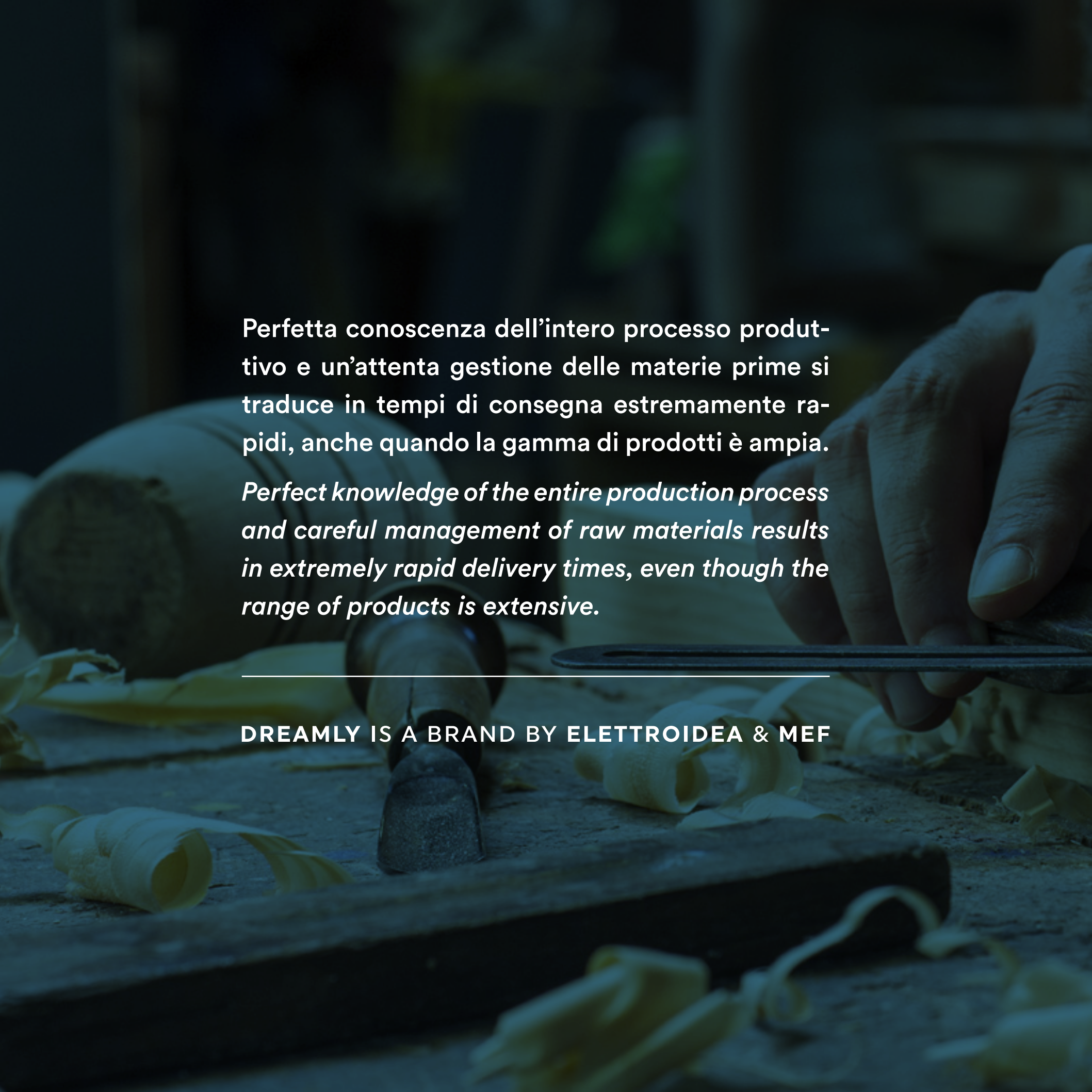




BEDS COLLECTION

Collezione Letti





Perfetta conoscenza dell'intero processo produttivo e un'attenta gestione delle materie prime si traduce in tempi di consegna estremamente rapidi, anche quando la gamma di prodotti è ampia.

Perfect knowledge of the entire production process and careful management of raw materials results in extremely rapid delivery times, even though the range of products is extensive.

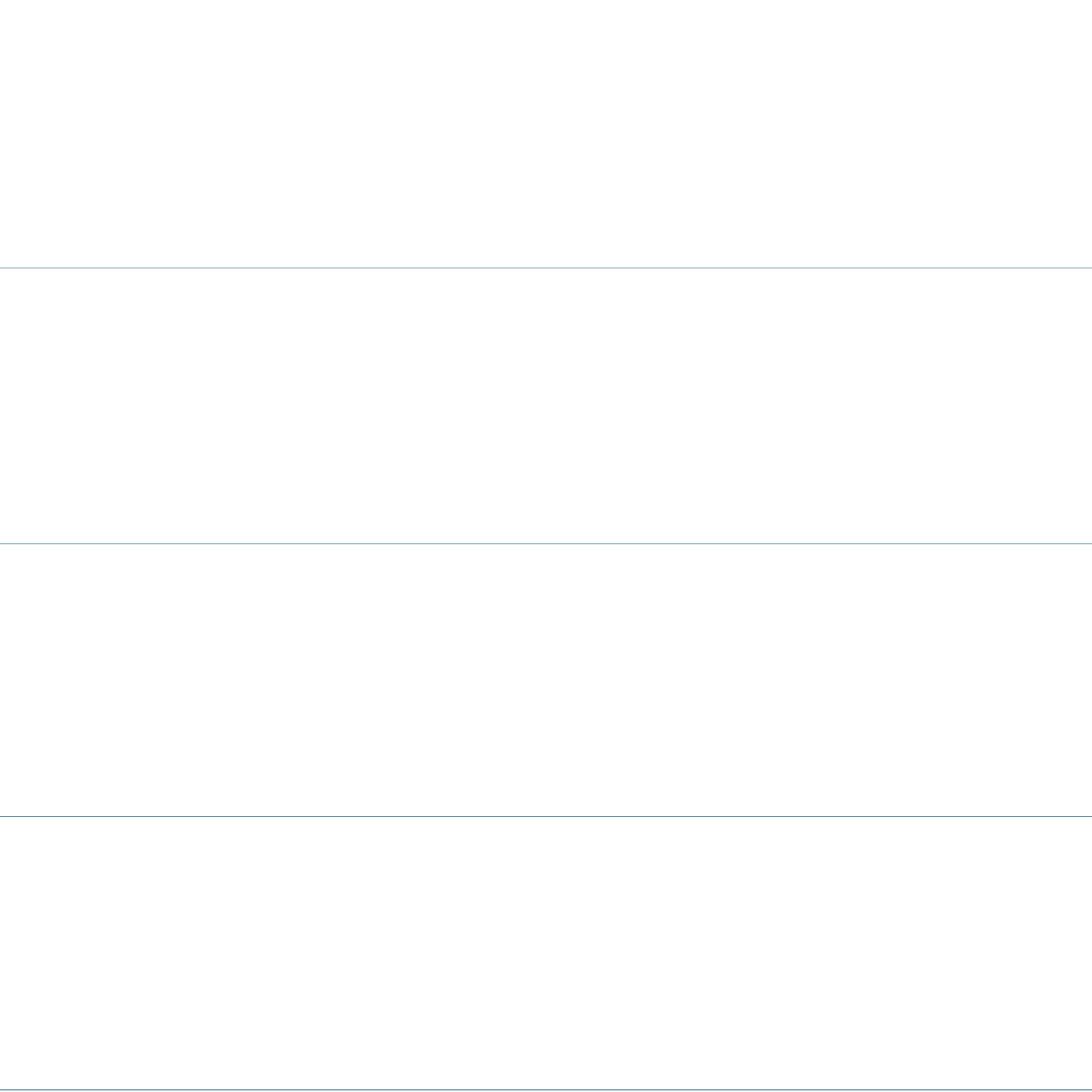
DREAMLY IS A BRAND BY ELETTRIDEA & MEF



Student & Medium #2



dreamily[®]
ITALIAN DESIGN FOR SLEEPING



Letti / *Beds*

7

Basi Letto / *Bed Bases*

39

Piedi / *Feet*

45

Tessuti / *Fabrics*

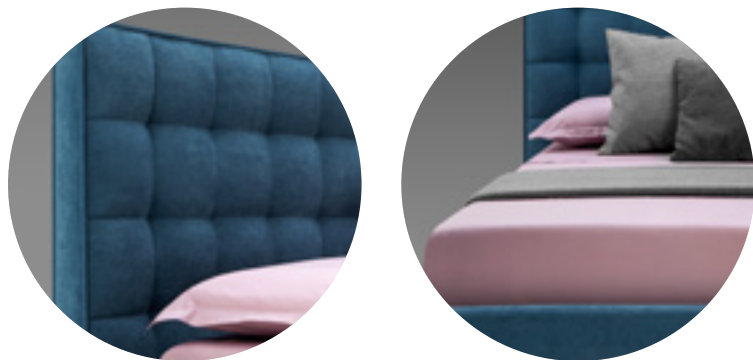
51



LETTI
BEDS

PASSION

Design: Dreamly Lab



Dormire può diventare una passione.
Sleep can be a passion.

- Struttura multistrato classe E1, completamente imbottita
- Rivestimento della testiera non rimovibile, rivestimento rimovibile nella struttura del letto
- *Structure in multilayer class E1, completely upholstered*
- *Non-removable cover for the headboard, removable cover for the bed frame*

Tessuto/Fabric: **SAVOY 95** ⓘ pg.61
(riferimento: immagine qui sotto) (see image below)





LETTI / BEDS

BASI LETTO / BED BASES

PIEDI / FEET

TESSUTI / FABRICS





NICE

Design: Dreamly Lab



La purezza nella forma. *Purity of design.*

- Struttura multistrato classe E1, completamente imbottita
- Rivestimento della testiera non rimovibile, rivestimento rimovibile nella struttura del letto
- *Structure in multilayer class E1, completely upholstered*
- *Non-removable cover for the headboard, removable cover for the bed frame*

Tessuto/Fabric: **ALASKA 20** ☉ pg.52



EXCLUSIVE

Design: Dreamly Lab



**L'esclusività e la capacità dell'artigiano
racchiuse nel letto dei tuoi sogni.
*The exclusivity and skill of the craftsman
enclosed in the bed of your dreams.***

- Struttura multistrato classe E1, completamente imbottita
- Rivestimento della testiera non rimovibile, rivestimento rimovibile nella struttura del letto
- *Structure in multilayer class E1, completely upholstered*
- *Non-removable cover for the headboard, removable cover for the bed frame*

Tessuto/Fabric: **GUS 06** ↻ pg. 56





LETTI / BEDS

BASI LETTO / BED BASES

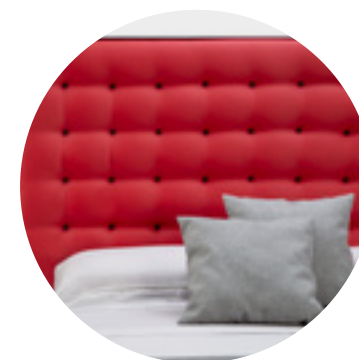
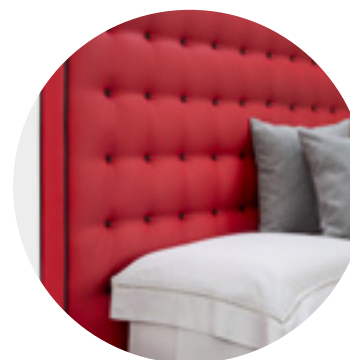
PIEDI / FEET

TESSUTI / FABRICS



POINT

Design: Dreamly Lab



Dormire non è solo un punto di arrivo ma anche un punto di partenza...
Sleep is not only a point of arrival but also a point of departure....

- Struttura multistrato classe E1, completamente imbottita
- Rivestimento della testiera non rimovibile, rivestimento rimovibile nella struttura del letto
- *Structure in multilayer class E1, completely upholstered*
- *Non-removable cover for the headboard, removable cover for the bed frame*

Tessuto/Fabric: **GUS 14** ⓘ pg. 56



ELEGANT

Design: Dreamly Lab



Linee eleganti e semplici per dare vita ai tuoi sogni speciali.

Elegant and simple lines to bring your special dreams to life.

- Struttura multistrato classe E1, completamente imbottita
- Rivestimento della testiera non rimovibile, rivestimento rimovibile nella struttura del letto
- *Structure in multilayer class E1, completely upholstered*
- *Non-removable cover for the headboard, removable cover for the bed frame*

Tessuto/Fabric: **GUS 01** ↻ pg. 56





LETTI / BEDS

BASI LETTO / BED BASES

PIEDI / FEET

TESSUTI / FABRICS





MASSIVE

Design: Dreamly Lab



**Una forte personalità
per assicurare le tue notti.
*A strong personality to comfort your nights.***

- Struttura multistrato classe E1, completamente imbottita
- Rivestimento della testiera non rimovibile, rivestimento rimovibile nella struttura del letto
- *Structure in multilayer class E1, completely upholstered*
- *Non-removable cover for the headboard, removable cover for the bed frame*

Tessuto/Fabric: **SAVOY 94** ⓘ pg. 61



SNUG

Design: Dreamly Lab



Il piacere di coccolarti nei tuoi sogni.
The pleasure of pampering you in your dreams.

- Struttura multistrato classe E1, completamente imbottita
- Rivestimento della testiera non rimovibile, rivestimento rimovibile nella struttura del letto
- *Structure in multilayer class E1, completely upholstered*
- *Non-removable cover for the headboard, removable cover for the bed frame*

Tessuto/Fabric: **MARVEL 39** ⓘ pg. 60





LETTI / BEDS

BASI LETTO / BED BASES

PIEDI / FEET

TESSUTI / FABRICS





SOFT

Design: Dreamly Lab



La morbidezza dei tuoi sogni e del tuo letto insieme, per sempre.
The softness of your dreams and your bed together, forever.

- Struttura multistrato classe E1, completamente imbottita
- Rivestimento della testiera non rimovibile, rivestimento rimovibile nella struttura del letto
- *Structure in multilayer class E1, completely upholstered*
- *Non-removable cover for the headboard, removable cover for the bed frame*

Tessuto/Fabric: **MARVEL 126** ↻ pg. 60



SENSE

Design: Dreamly Lab



La piacevole sensazione del benessere.
The pleasant sensation of wellness.

- Struttura multistrato classe E1, completamente imbottita
- Rivestimento della testiera non rimovibile, rivestimento rimovibile nella struttura del letto
- *Structure in multilayer class E1, completely upholstered*
- *Non-removable cover for the headboard, removable cover for the bed frame*

Tessuto/Fabric: **CABAJO 05 CAMEL** ⓘ pg. 53





LETTI / BEDS

BASI LETTO / BED BASES

PIEDI / FEET

TESSUTI / FABRICS





KIND

Design: Dreamly Lab



**La leggerezza che avvolge i tuoi sogni.
The lightness that envelops your dreams.**

- Struttura multistrato classe E1, completamente imbottita
- Rivestimento della testiera non rimovibile, rivestimento rimovibile nella struttura del letto
- *Structure in multilayer class E1, completely upholstered*
- *Non-removable cover for the headboard, removable cover for the bed frame*

Tessuto/Fabric: **NEWBRONX 10 OCEAN** → pg. 62



HONESTY

Design: Dreamly Lab



Le linee che cullano il tuo sonno.
The lines that lull your sleep.

- Struttura multistrato classe E1, completamente imbottita
- Rivestimento della testiera non rimovibile, rivestimento rimovibile nella struttura del letto
- *Structure in multilayer class E1, completely upholstered*
- *Non-removable cover for the headboard, removable cover for the bed frame*

Tessuto/Fabric: ATLANTIC 21 DARK GREY  pg. 54





LETTI / BEDS

BASI LETTO / BED BASES

PIEDI / FEET

TESSUTI / FABRICS





GENEROUS

Design: Dreamly Lab



**Dormi coccolato dalla morbidezza.
Sleep cuddled in softness.**

- Struttura multistrato classe E1, completamente imbottita
- Rivestimento della testiera non rimovibile, rivestimento rimovibile nella struttura del letto
- *Structure in multilayer class E1, completely upholstered*
- *Non-removable cover for the headboard, removable cover for the bed frame*

Tessuto/Fabric: **MARVEL 36** ⓘ pg. 60



HARMONIC

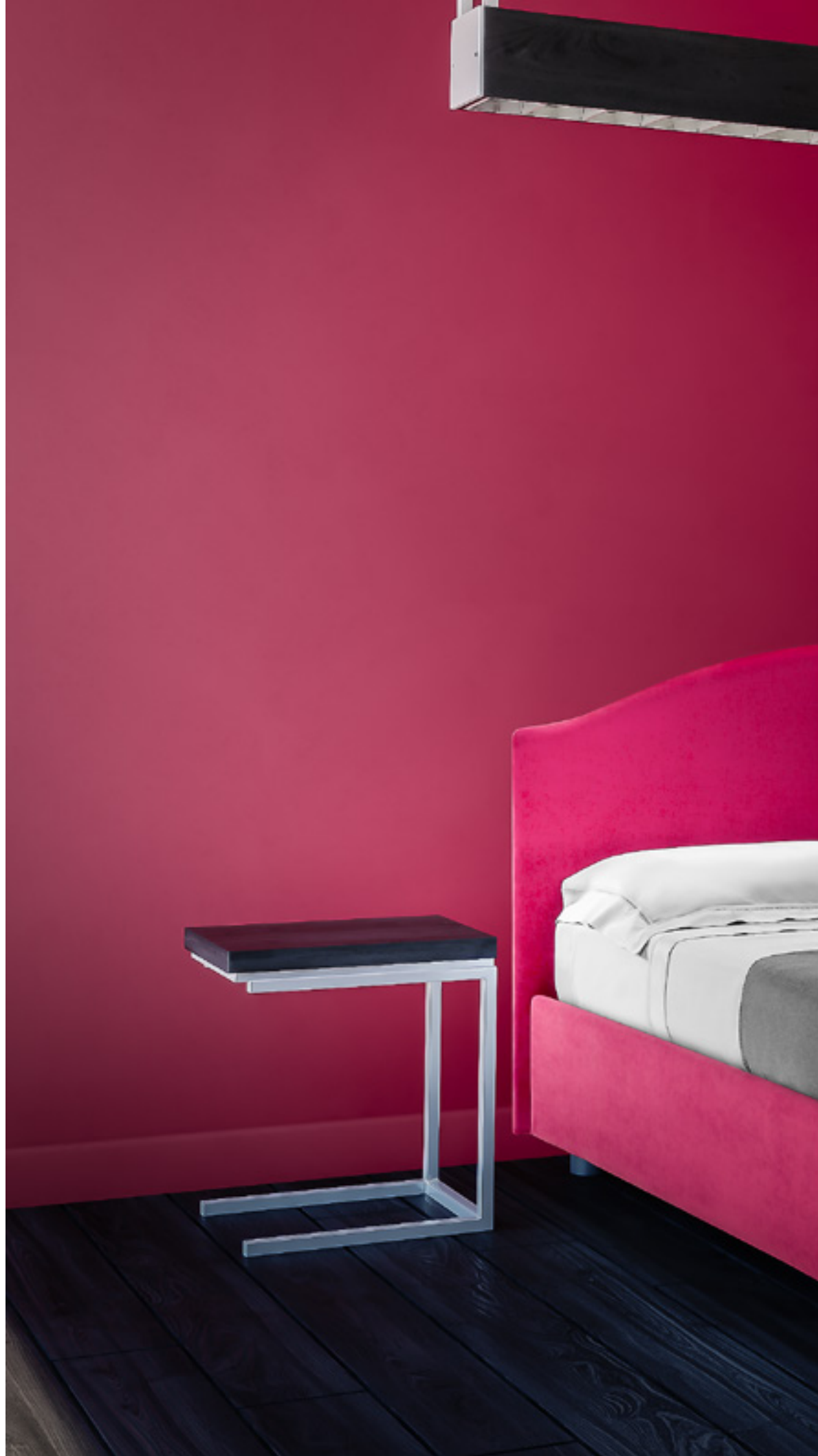
Design: Dreamly Lab



**L'armonia del riposo: le dolci curve
che coccolano i tuoi sogni.**
*The harmony of rest: the gentle curves
that cuddle your dreams.*

- Struttura multistrato classe E1, completamente imbottita
- Rivestimento della testiera non rimovibile, rivestimento rimovibile nella struttura del letto
- *Structure in multilayer class E1, completely upholstered*
- *Non-removable cover for the headboard, removable cover for the bed frame*

Tessuto/Fabric: LOUVRE 27 WINE ☺ pg. 58





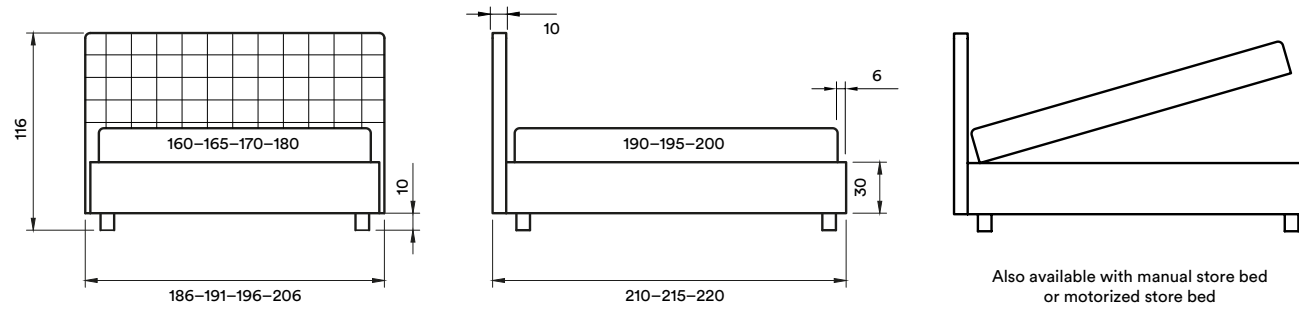
LETTI / BEDS

BASI LETTO / BED BASES

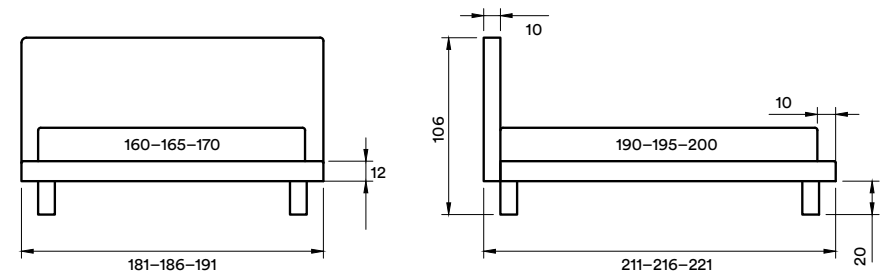
PIEDI / FEET

TESSUTI / FABRICS

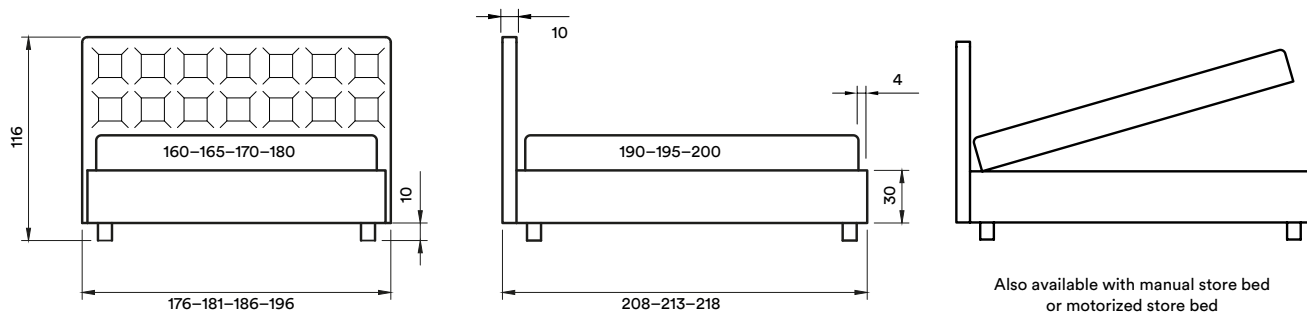
PASSION



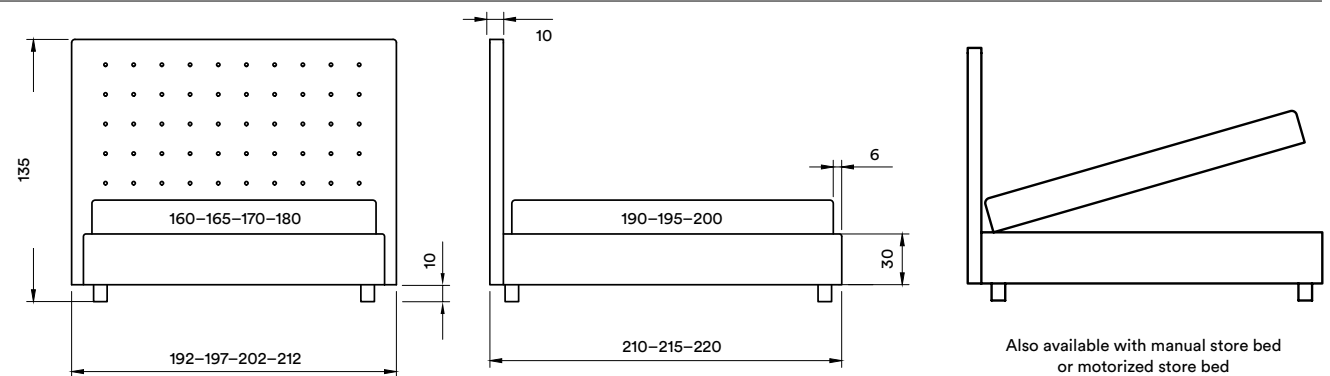
NICE



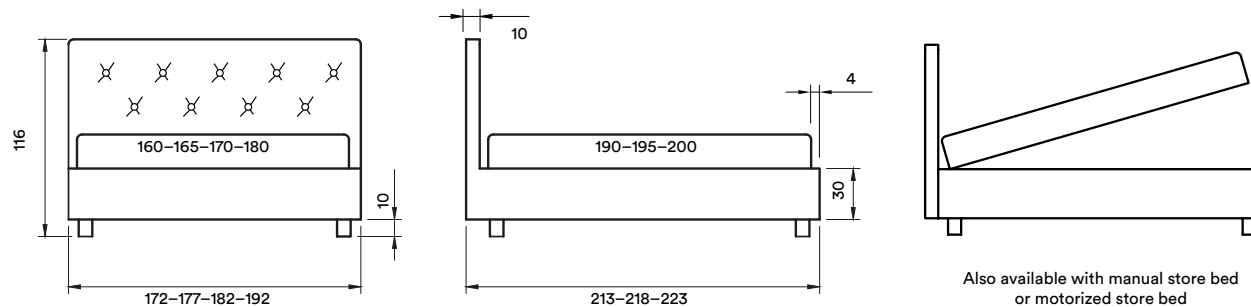
EXCLUSIVE



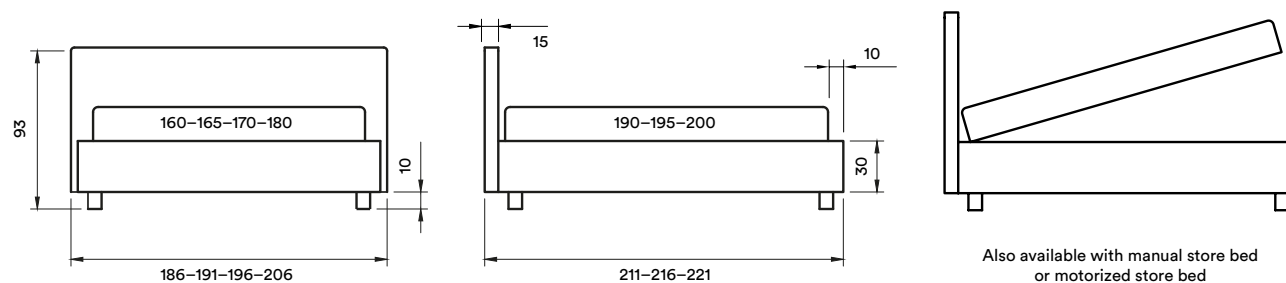
POINT



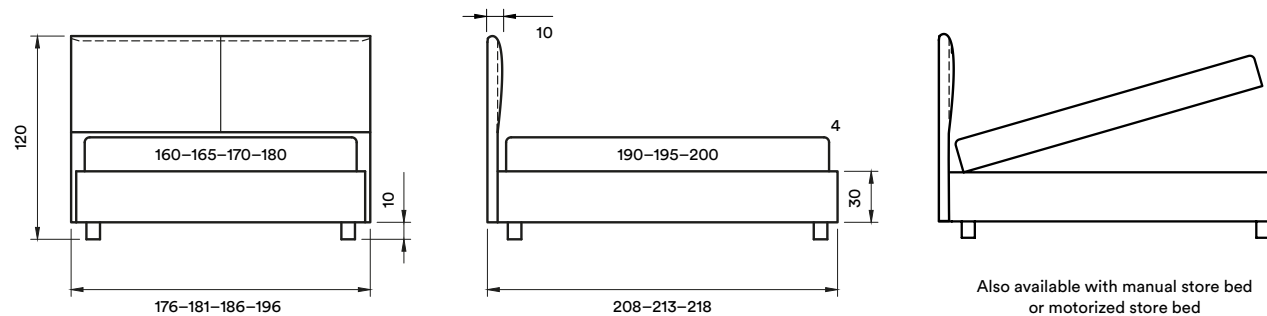
ELEGANT



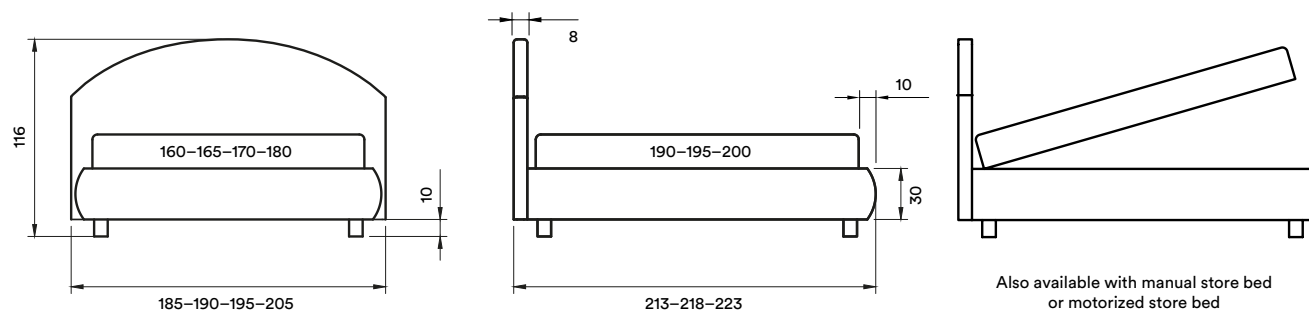
MASSIVE



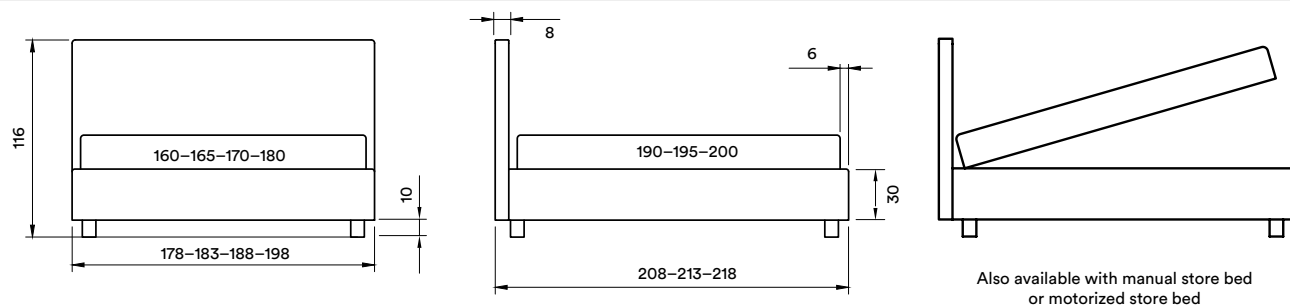
SNUG



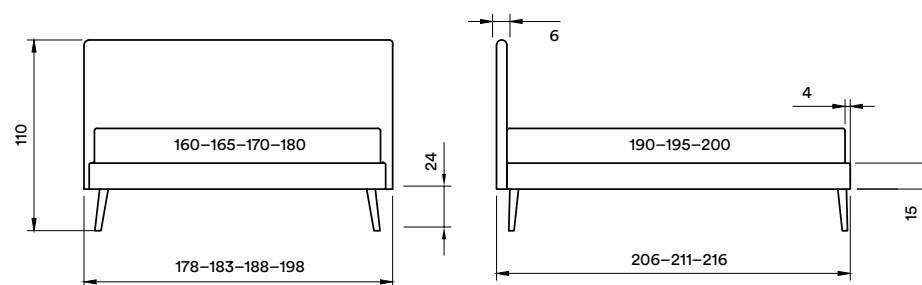
SOFT



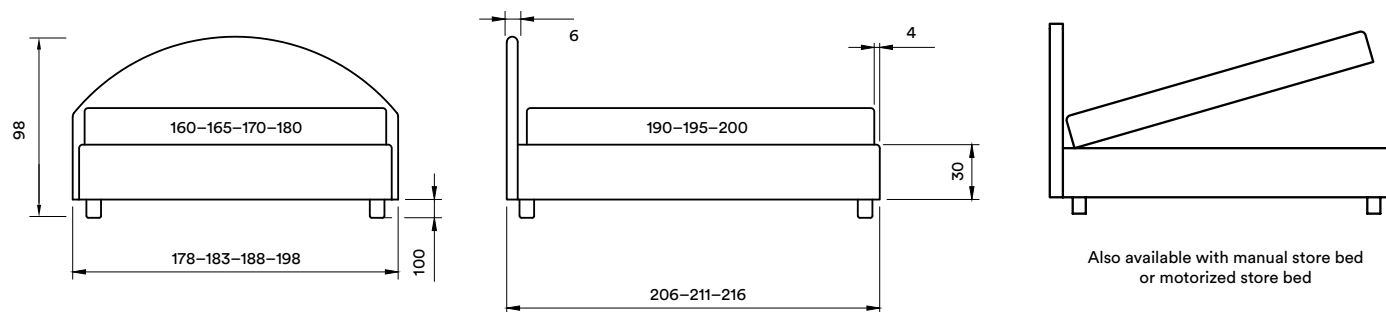
SENSE



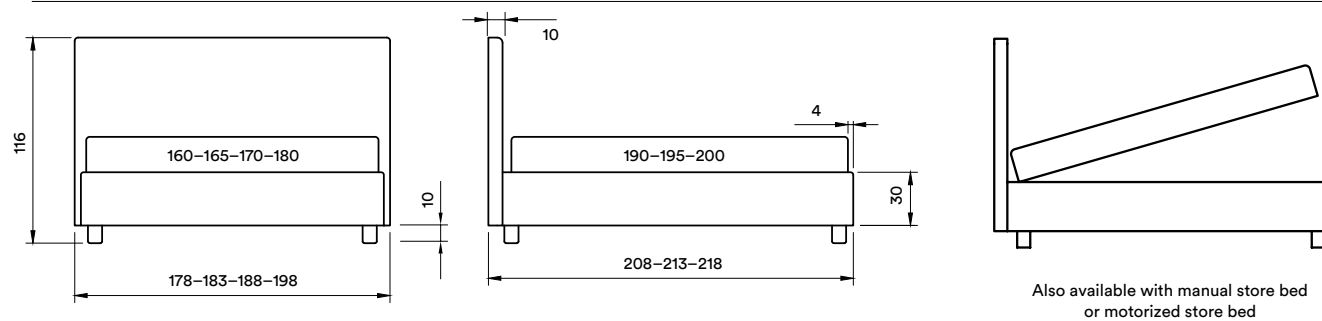
KIND



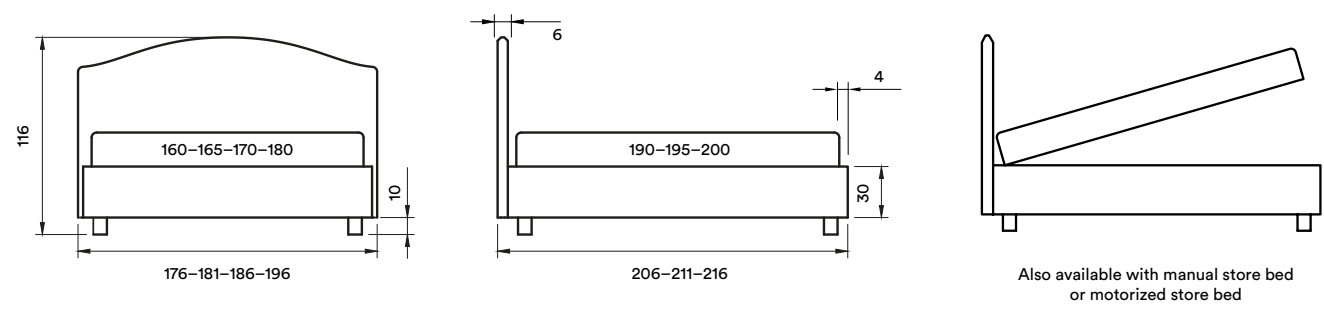
HONESTY



GENEROUS



HARMONIC





BASI LETTO
BED BASES

D-MOTION



D-MOTION è la base orientabile che permette di regolare la testa e i piedi del materasso, in modo da trovare il livello perfetto di comfort e sostegno. È possibile sincronizzare due basi o controllare il letto con il telecomando o con uno smartphone. Dormire con un comfort eccezionalmente ottimale che solo una base regolabile può fornire. Lavorare più comodamente con un portatile regolando la testa e/o i piedi del materasso.

D-Motion adjustable foundation allows you to adjust the head and foot of your mattress, so you can find the perfect level of comfort and support. It is possible to synchronize two foundation or control the motion bed with the remote control or a smartphone. Sleep with exceptionally optimized comfort that only an adjustable foundation can provide. Work more comfortably on your laptop or handheld device by adjusting the head and/or foot of the mattress.

D-Motion ha una solida struttura in compensato, schiumato e rivestimenti in tessuto con velcro in modo che i rivestimenti siano tutti sfoderabili. Molteplici soluzioni per le testate. Soluzione di nuova concezione per il motore: molto robusto e silenzioso. Fino a 240 kg.

D-Motion has a solid plywood structure, foamed and fabric covers with velcro so the fabric covers are all removable. Many solutions for the headboards. New concept solution for the motor: very strong and silent. Up to 240 kg.

Tessuto/Fabric: **SAVOY 94** → pg. 59





E-MOTION

LETTI / BEDS

BASI LETTO / BED BASES

PIEDI / FEET

TESSUTI / FABRICS



E-MOTION è la base orientabile che permette di regolare la testa e i piedi del materasso, in modo da trovare il livello perfetto di comfort e sostegno. È possibile sincronizzare due basi o controllare il letto con il telecomando o con uno smartphone. Dormire con un comfort eccezionalmente ottimale che solo una base regolabile può fornire. Lavorare più comodamente con un portatile regolando la testa e/o i piedi del materasso.

E-Motion adjustable foundation allows you to adjust the head and foot of your mattress, so you can find the perfect level of comfort and support. It is possible to synchronize two foundation or control the motion bed with the remote control or a smartphone. Sleep with exceptionally optimized comfort that only an adjustable foundation can provide. Work more comfortably on your laptop or handheld device by adjusting the head and/or foot of the mattress.

E-Motion ha una solida struttura in compensato, schiumato e rivestimenti in tessuto con velcro in modo che i rivestimenti siano tutti sfoderabili. Molteplici soluzioni per le testate. Soluzione di nuova concezione per il motore: molto robusto e silenzioso. Fino a 240 kg.

E-Motion has a solid plywood structure, foamed and fabric covers with velcro so the fabric covers are all removable. Many solutions for the headboards. New concept solution for the motor: very strong and silent. Up to 240 kg.

Tessuto/Fabric: **MARVEL 126** → pg. 58



SLATTED SOMMIER



Nuovo design che include i vantaggi della rete a doghe e la praticità del sommier. Un letto finito pronto per l'uso. Telaio in legno rivestito in schiuma e tessuto. Doghe in faggio multistrato. Nella zona centrale è possibile regolare la rigidità. Nella zona delle spalle le doghe sono di 25x8 mm per aumentare la flessibilità per ottimizzare il comfort.

New design that includes the advantages of the slatted frame and the practicality of the sommie. A finished bed ready for use. Wooden frame covered in foam and fabric. Multilayer beech slats. In the central zone you can also adjust the firmness. In the shoulder zone the slats are 25x8 mm to increase flexibility to optimise comfort

1. Gambe in faggio massiccio
Legs in massive beech
2. Possibilità di fissare la testata
Possibility to attach the headboard
3. Altezza del telaio 15 cm
Height of the frame 15 cm

Tessuto/Fabric: GUS 22 → pg. 54

FLAT SOMMIER



Base letto dal design minimale, perfetto per le camere da letto informali e dallo stile moderno. Telaio in legno rivestito in schiuma e tessuto. Piano a doghe in legno / piano rigido/ piano molleggiato, possibilità di ampia scelta dei rivestimenti.

Bed base with a minimalist design, perfect for informal, modern-style bedrooms. Wooden frame covered in foam and fabric. Wooden slatted top/rigid top/ spring top, large choice of coverings.

1. Gambe in faggio massiccio
Legs in massive beech
2. Possibilità di fissare la testata
Possibility to attach the headboard
3. Altezza del telaio 22 cm
Height of the frame 22 cm

Tessuto/Fabric: **GUS 05** → pg. 54



PIEDI
FEET



WOODEN
CUBIC



PLASTIC
ROUNDED



WOODEN
CLASSIC



IRON
CHROMED



WOODEN
PYRAMIDAL



WOODEN
ANGULAR



WOODEN
LARGE
ANGULAR

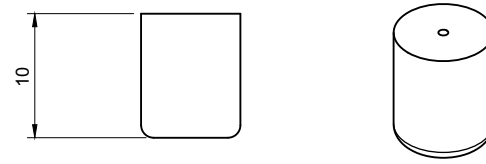


WOODEN
SQUARE

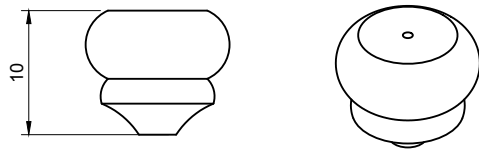
WOODEN CUBIC



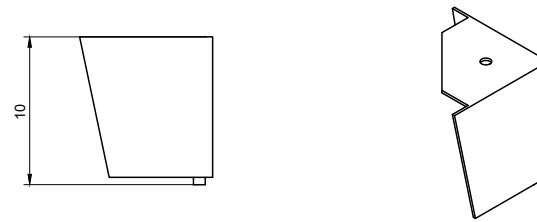
ROUNDED PLASTIC



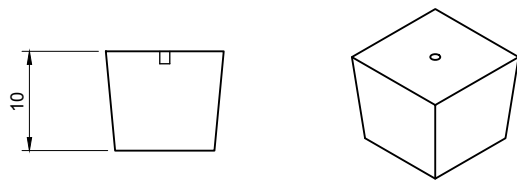
WOODEN CLASSIC



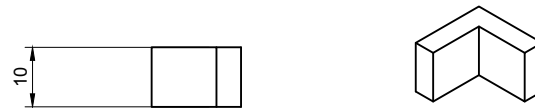
CHROMED IRON



WOODEN PYRAMIDAL



ANGULAR WOODEN



LARGE ANGULAR WOODEN



WOODEN SQUARE





TESSUTI
FABRICS

ALASKA

La particolarità del tessuto Alaska sta nel suo aspetto simile al peluche, avvolgente e caldo è l'ideale per la produzione di letti e sommier dal confort assicurato.

The particularity of the Alaska fabric lies in its plush-like appearance, enveloping and warm, it is ideal for the production of beds and sommieres with guaranteed comfort.

Composizione/Composition 92% Poliestere/Polyester
8% Nylon

Peso/Weight 350±5% g/mq

Martindale (ISO 12947-1) 60.000 giri



Impermeabile
all'acqua
Water repellent



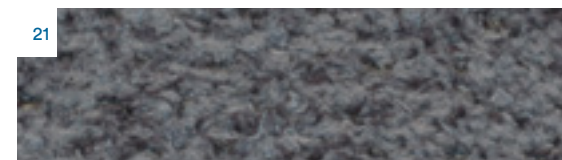
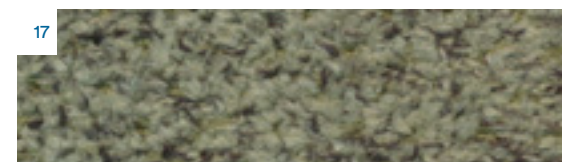
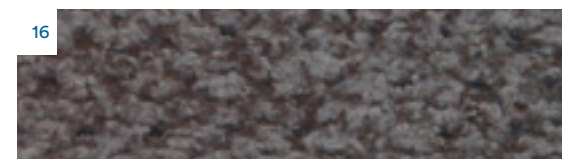
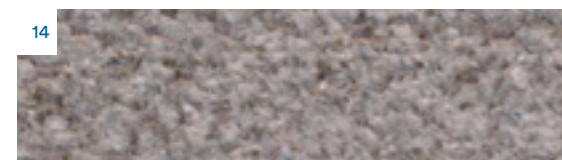
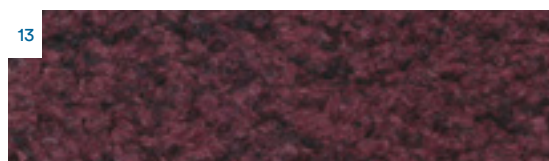
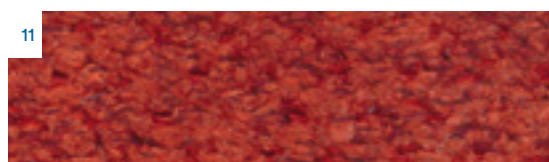
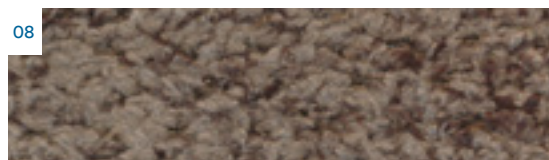
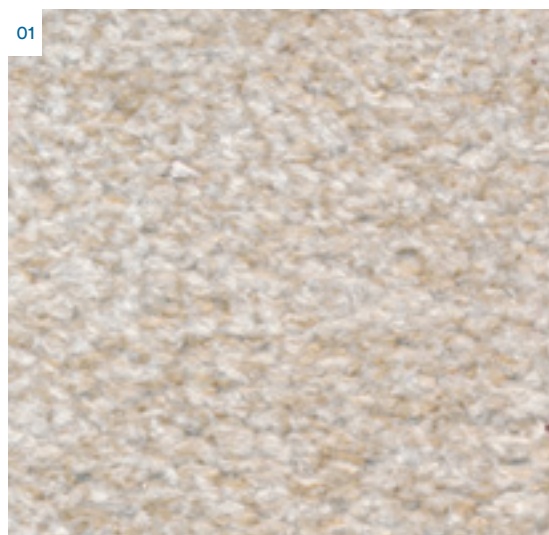
Resistente a
macchie di caffè
*Resistant to
coffee stains*



Resistente a
macchie di
bibite
*Resistant to
drink stains*

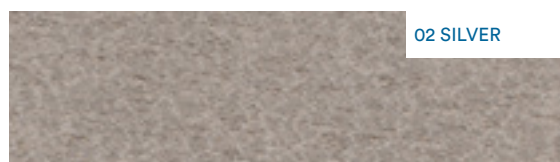


Resistente a
macchie oleose
*Resistant to
oily stains*

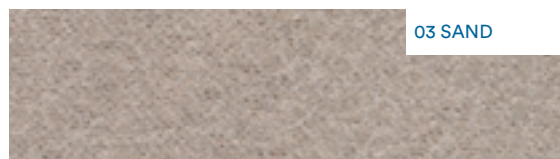


Il colore dei tessuti può leggermente variare in base alla fornitura.
The color of fabrics may vary slightly depending on the supply

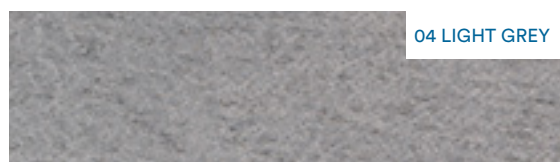
CABAJO



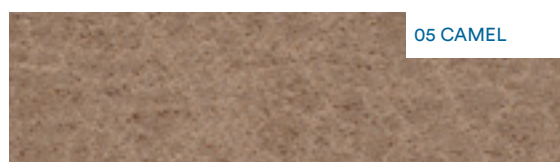
02 SILVER



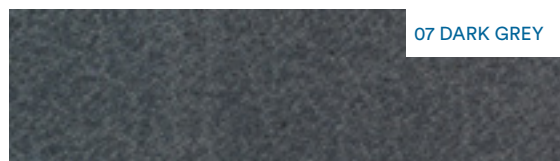
03 SAND



04 LIGHT GREY



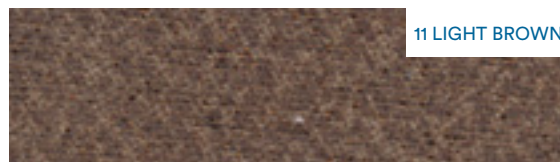
05 CAMEL



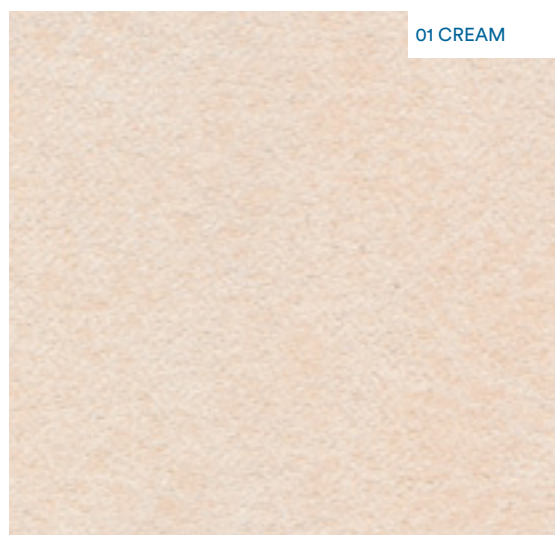
07 DARK GREY



09 BORDEAUX



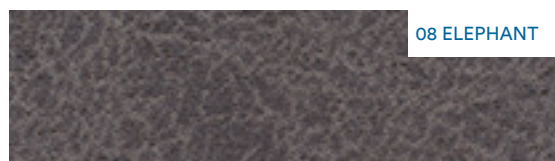
11 LIGHT BROWN



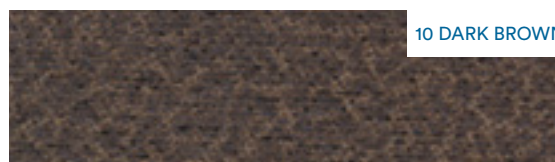
01 CREAM



06 YELLOW



08 ELEPHANT



10 DARK BROWN



12 BEIGE

Microfibra adatta per rivestimenti d'arredo con effetto pelle vintage, molto morbida. Cabajo è adatto ad ogni tipo di letto.

Microfibre suitable for upholstery with vintage leather effect, very soft. Cabajo is suitable for every type of bed.

Composizione/Composition 100% Poliestere/Polyester

Peso/Weight 455±2% g/ml

Martindale (ISO 12947-1) 40.000 giri



Impermeabile
all'acqua
Water repellent



Resistente a
macchie di caffè
*Resistant to
coffee stains*



Resistente a
macchie di
bibite
*Resistant to
drink stains*



Resistente a
macchie oleose
*Resistant to
oily stains*



40°C



Il colore dei tessuti può leggermente variare in base alla fornitura.
The color of fabrics may vary slightly depending on the supply



ATLANTIC

Microfibra per rivestimenti d'arredo con effetto tessile, molto sottile. Il trattamento Stain Resistant rende Atlantic resistente ai liquidi e adatto ad ogni tipo di letto.

Microfibre for upholstery with textile effect, very thin. Stain Resistant treatment makes Atlantic resistant to liquids and suitable for all types of bedding

Composizione/Composition 100% Poliestere/Polyester

Peso/Weight 520±5% g/mq

Martindale (ISO 12947-1) 80.000 giri



Impermeabile
all'acqua
Water repellent



Resistente a
macchie di caffè
*Resistant to
coffee stains*



Resistente a
macchie di
bibite
*Resistant to
drink stains*



Resistente a
macchie oleose
*Resistant to
oily stains*



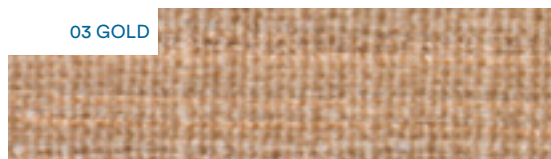
01 SAND



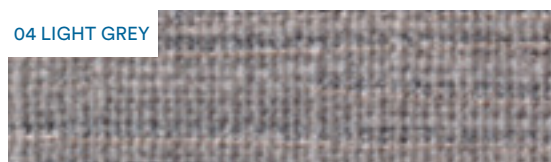
02 ALMOND



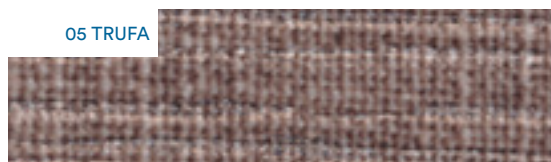
03 GOLD



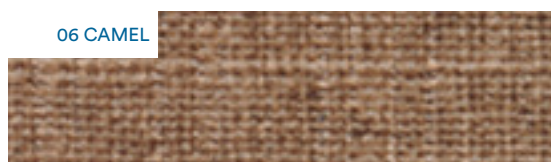
04 LIGHT GREY



05 TRUFA



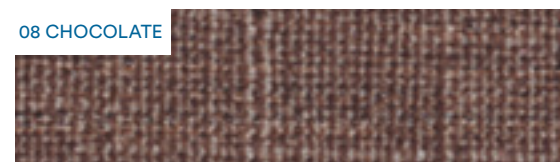
06 CAMEL



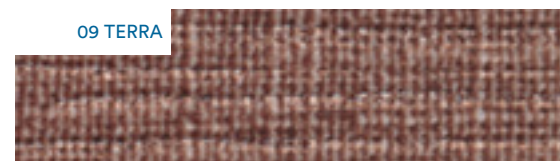
07 MOUSE



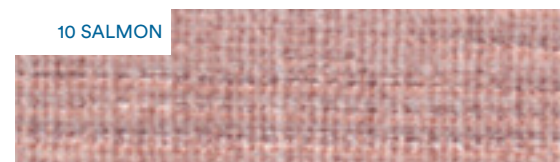
08 CHOCOLATE



09 TERRA



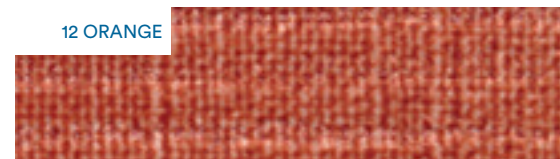
10 SALMON



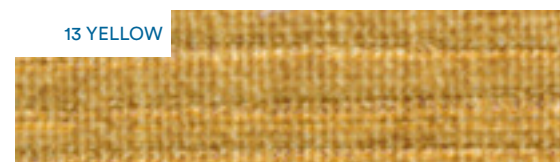
11 MARSALA



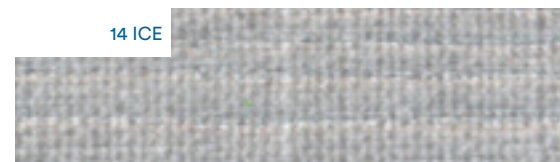
12 ORANGE



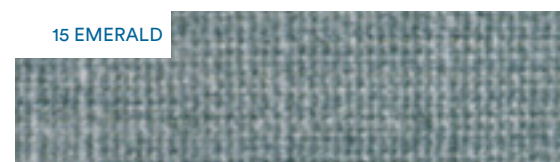
13 YELLOW



14 ICE



15 EMERALD

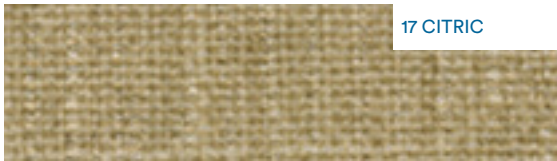


16 SKY



Il colore dei tessuti può leggermente variare in base alla fornitura.
The color of fabrics may vary slightly depending on the supply





17 CITRIC



18 OCEAN



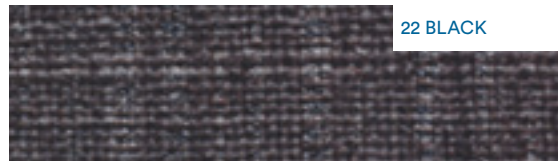
19 LAVANDA



20 MUD



21 DARK GREY



22 BLACK

GUS

Il tessuto GUS è composto al 100% di poliestere ma il finish poliuretano superficiale dona una mano e un look riconducibile alla finta pelle ma con la facilità di manutenzione di un tessuto dalle ottime qualità antitaglio e antiraffio e di facile pulizia

The GUS fabric is composed of 100 per cent polyester, but the surface polyurethane finish gives it a hand and look reminiscent of imitation leather, but with the easy-care qualities of a fabric with excellent cut-resistant and scratch-resistant qualities and easy-care

Composizione/Composition 100% Poliestere/Polyester
Peso/Weight 360±5% g/mq
Martindale (ISO 12947-1) 40.000 giri



Impermeabile
all'acqua
Water repellent



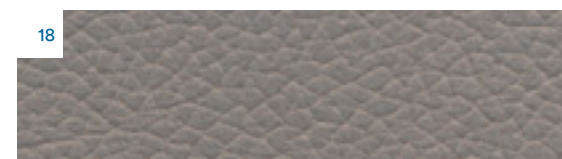
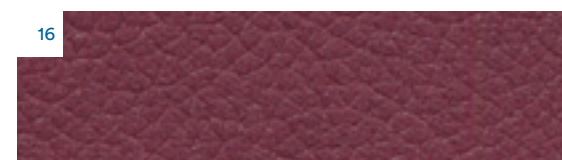
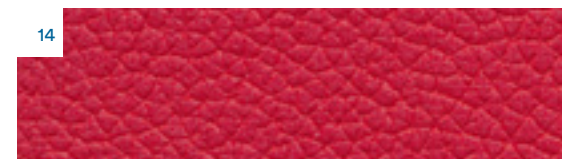
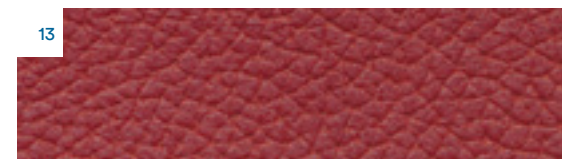
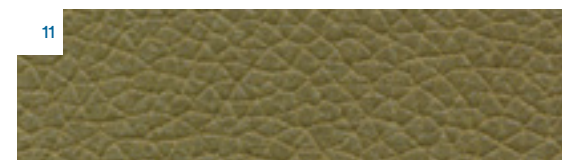
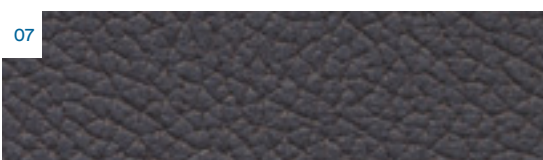
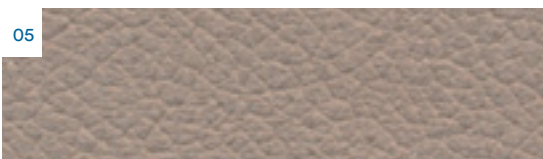
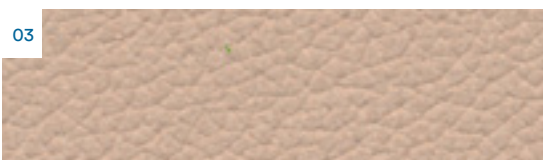
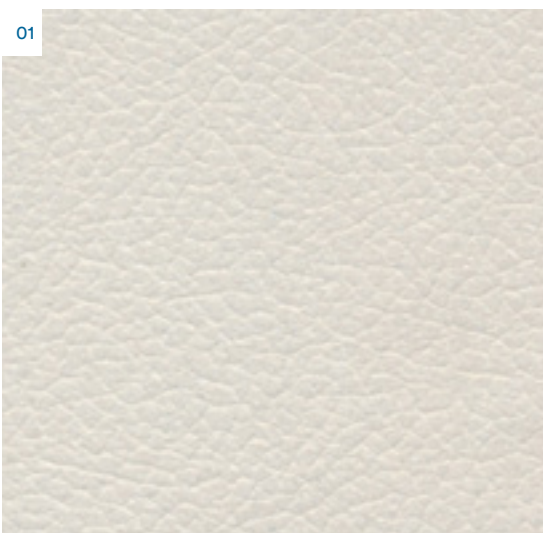
Resistente a
macchie di caffè
*Resistant to
coffee stains*



Resistente a
macchie di
bibite
*Resistant to
drink stains*

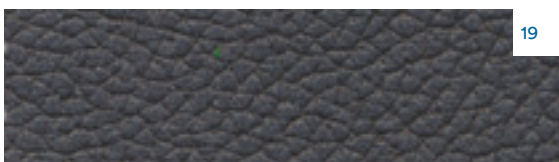


Resistente a
macchie oleose
*Resistant to
oily stains*



Il colore dei tessuti può leggermente variare in base alla fornitura.
The color of fabrics may vary slightly depending on the supply





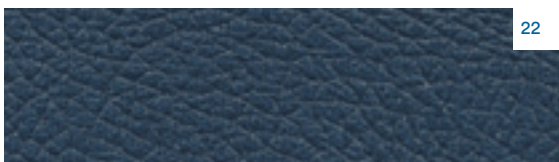
19



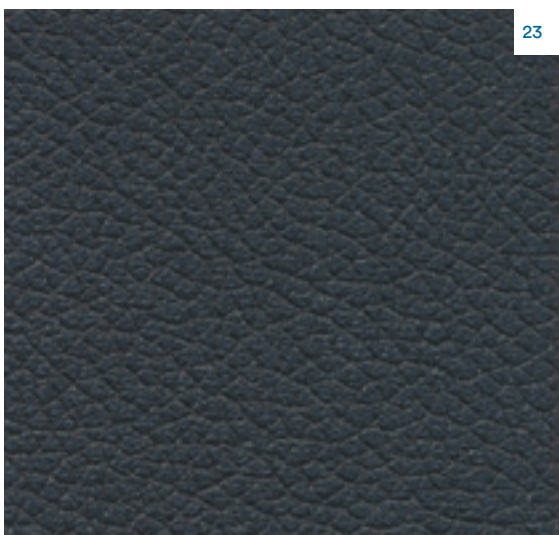
20



21



22



23

LOUVRE

Louvre è il velluto classico per eccellenza, capace di adattarsi a diversi stili e a combinamenti per ottenere un ambiente raffinato e contemporaneo. Presenta una mano vellutata, soffice, e morbida al tatto con una brillantezza elevata.

Louvre is the classic velvet par excellence, capable of adapting to different styles and combinations to achieve a refined and contemporary ambience. It has a velvety, soft touch with a high lustre.

Composizione/Composition	100% Poliestere/Polyester
Peso/Weight	520±5% g/mq
Martindale (ISO 12947-1)	100.000 giri



Impermeabile
all'acqua
Water repellent



Resistente a
macchie di caffè
*Resistant to
coffee stains*



Resistente a
macchie di
bibite
*Resistant to
drink stains*



Resistente a
macchie oleose
*Resistant to
oily stains*



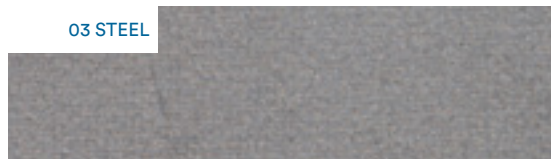
01 LIGHT BLUE



02 SAFIRA



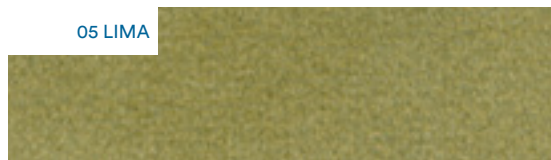
03 STEEL



04 TURQUOISE



05 LIMA



06 OCEAN



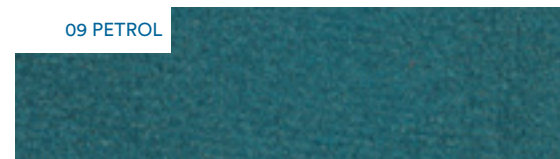
07 FOREST



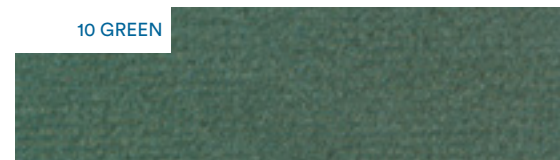
08 DEEP BLUE



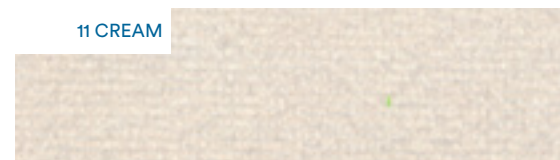
09 PETROL



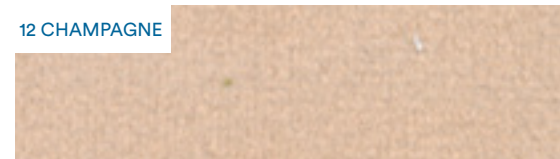
10 GREEN



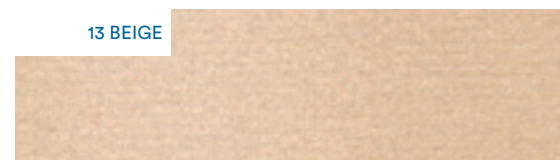
11 CREAM



12 CHAMPAGNE



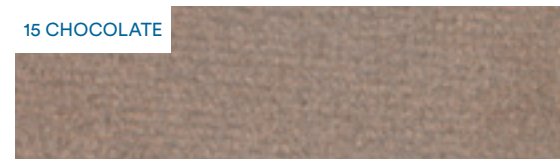
13 BEIGE



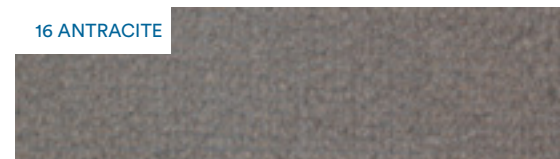
14 KHAKI



15 CHOCOLATE



16 ANTRACITE

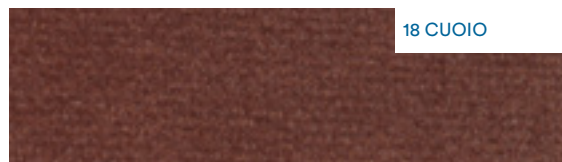


Il colore dei tessuti può leggermente variare in base alla fornitura.
The color of fabrics may vary slightly depending on the supply





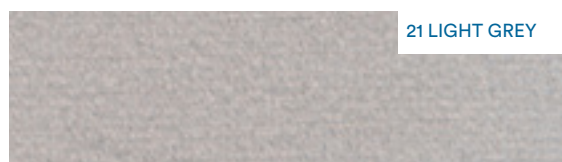
17 BRICK



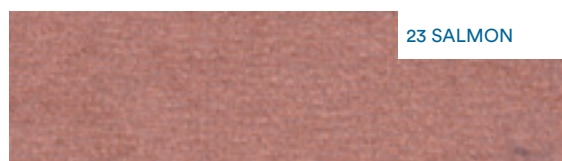
18 CUOIO



19 TEJA



21 LIGHT GREY



23 SALMON



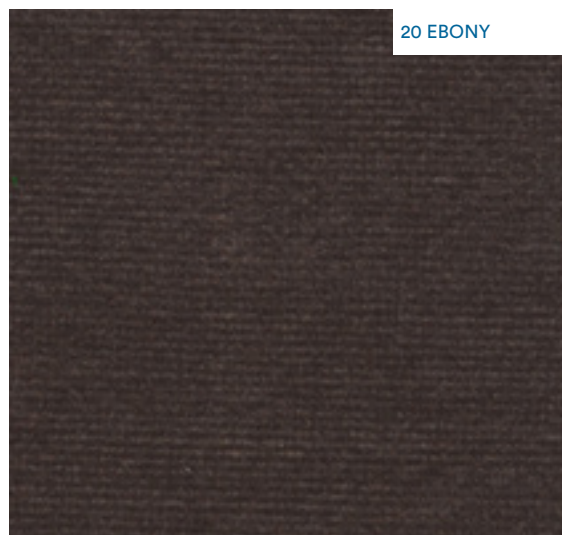
25 VIOLET



27 WINE



29 PURPLE



20 EBONY



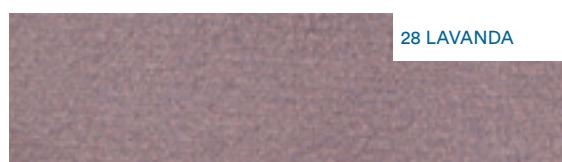
22 PINK



24 DEEP RED



26 LILAC



28 LAVANDA



30 BLACK

MARVEL

Marvel è un'evoluzione delle microfibre e dei tessuti smacchiabili. E' un tessuto più resistente delle normali microfibre a cui è stato applicato un particolare trattamento che permette alle macchie liquide di scivolare via e a quelle secche di essere facilmente asportate con acqua e sapone

Marvel is an evolution of microfibres and stainable fabrics. It is a fabric that is more resistant than normal microfibres and has been given a special treatment that allows liquid stains to slide off and dry stains to be easily removed with soap and water.

Composizione/Composition 90% Poliestere/Polyester
10% Cotone/Cotton

Peso/Weight 500±5% g/ml

Martindale (ISO 12947-1) 40.000 giri



Impermeabile
all'acqua
Water repellent



Resistente a
macchie di caffè
*Resistant to
coffee stains*



Resistente a
macchie di
bibite
*Resistant to
drink stains*



Resistente a
macchie oleose
*Resistant to
oil stains*



Resistenza
all'usura
*Resistance to
wear*



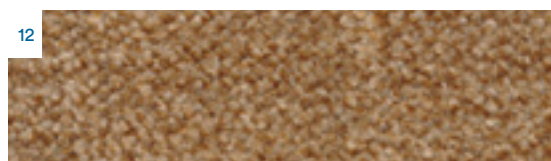
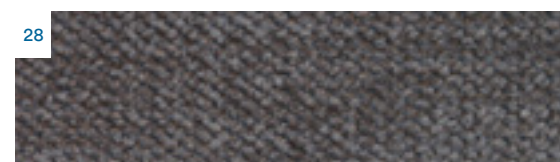
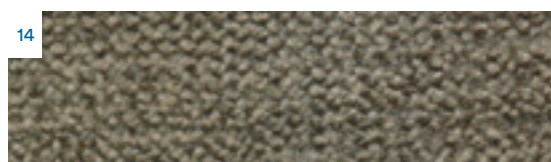
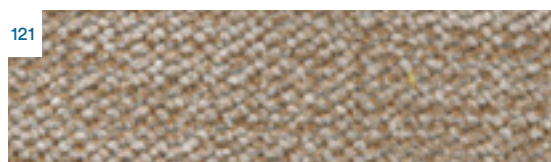
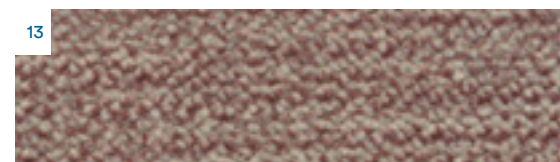
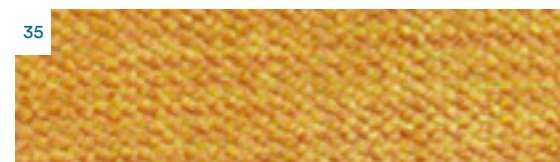
Trattamento
anallergico
*Hypoallergenic
treatment*



Trattamento
antibatterico
*Antibacterial
treatment*



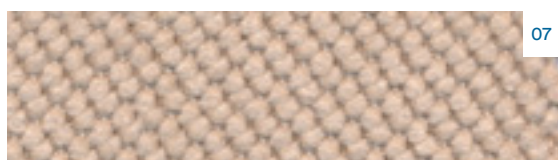
Testato
resistente a 30
lavaggi
*Tested treatment
resistant to 30
washes*



Il colore dei tessuti può leggermente variare in base alla fornitura.
The color of fabrics may vary slightly depending on the supply



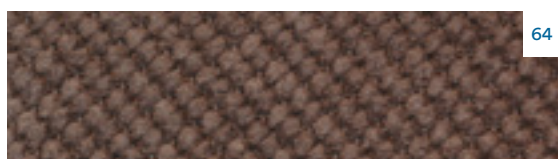
SAVOY



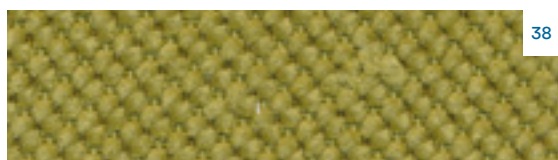
07



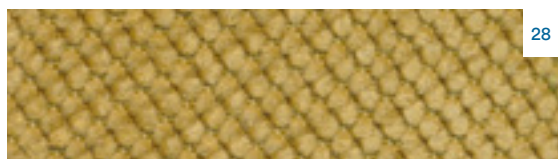
20



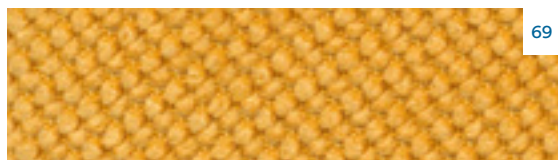
64



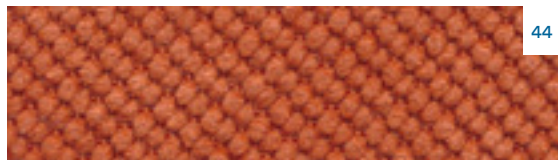
38



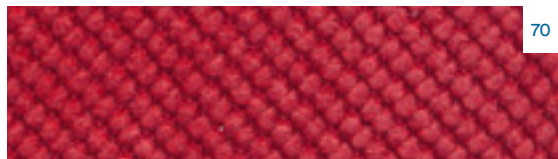
28



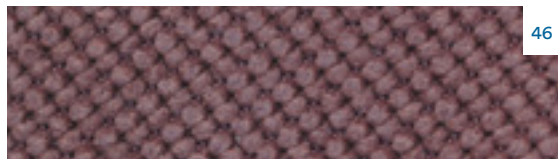
69



44



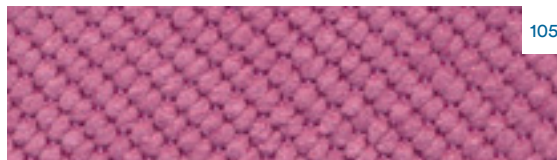
70



46



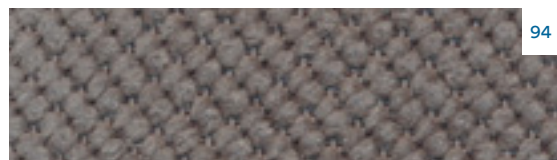
25



105



95



94



31

Savoy è un tessuto di moderna concezione, piacevole al tatto e molto resistente all'usura ed all'abrasione. La caratteristica principale del tessuto Savoy è la sua totale impermeabilità all'acqua: è infatti garantito come "water repellent".

Savoy is a modern fabric, pleasant to the touch and very resistant to wear and abrasion.

The main characteristic of Savoy fabric is its total impermeability to water: it is guaranteed as 'water repellent'.

Composizione/Composition 89% Poliestere/Polyester
8% Poliammide/Polyamide
2% Cotone/Cotton
1% Viscosa/Viscose

Peso/Weight 550±2% g/ml
Martindale (ISO 12947-1) 40.000 giri



Impermeabile
all'acqua
Water repellent



Resistente a
macchie di caffè
*Resistant to
coffee stains*



Resistente a
macchie di
bibite
*Resistant to
drink stains*



Il colore dei tessuti può leggermente variare in base alla fornitura.
The color of fabrics may vary slightly depending on the supply



NEW BRONX

New Bronx è un tessuto per rivestimenti d'arredo con mano ciniglia. Il trattamento idrorepellente (Stain Resistant) e la vasta colorazione lo rendono la scelta giusta per chi cerca praticità, morbidezza senza rinunciare allo stile. La ciniglia è un tessuto elastico molto morbido con un effetto lucido, quasi cangiante

New Bronx is a chenille-handle upholstery fabric. Its water-repellent treatment (Stain Resistant) and wide colour range make it the right choice for those seeking practicality, softness without sacrificing style. Chenille is a very soft stretch fabric with a shiny, almost iridescent effect.

Composizione/Composition 100% Poliestere/Polyester
Peso/Weight 426±5% g/mq
Martindale (ISO 12947-1) 20.000 giri



Impermeabile
all'acqua
Water repellent



Resistente a
macchie di caffè
*Resistant to
coffee stains*



Resistente a
macchie di
bibite
*Resistant to
drink stains*



Resistente a
macchie oleose
*Resistant to
oily stains*



01 BEIGE



08 BROWN



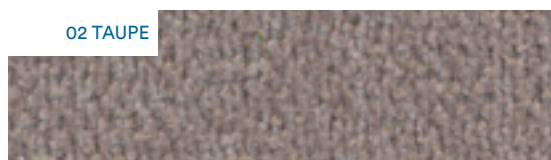
09 BLACK



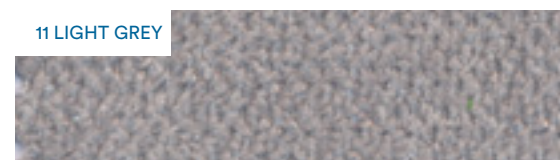
10 OCEAN



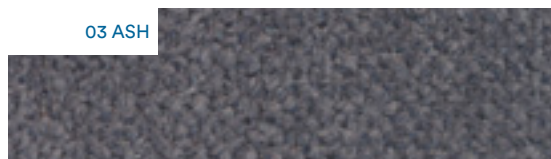
02 TAUPE



11 LIGHT GREY



03 ASH



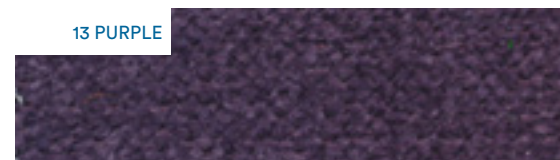
12 JEANS



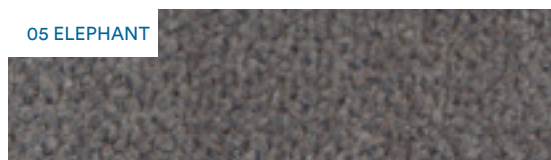
04 CAMEL



13 PURPLE



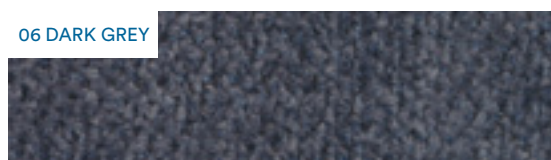
05 ELEPHANT



14 YELLOW



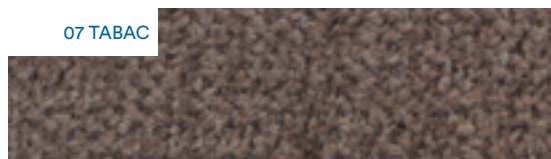
06 DARK GREY



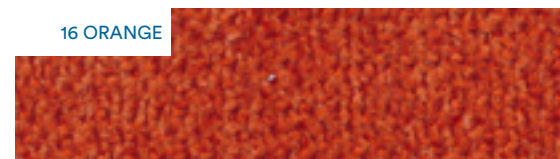
15 MOSTAZA



07 TABAC



16 ORANGE



Il colore dei tessuti può leggermente variare in base alla fornitura.
The color of fabrics may vary slightly depending on the supply





17 MOSS



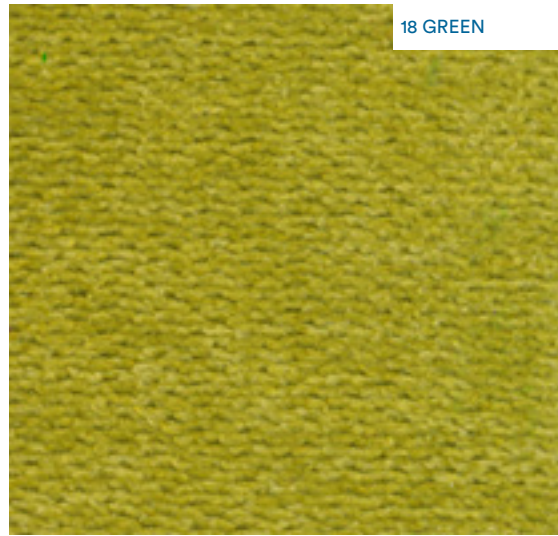
19 BORDEAUX



20 WATER GREEN



21 TURQUOISE



18 GREEN



22 PETROL

TEKNOFIBRA

Teknofibra è la classica microfibra di poliestere, accoppiata con un morbido pile che la rende adatta a tutti gli usi nell'ambito dell'arredo casa con una resa eccellente, e facile da pulire grazie all'innovativo trattamento antimacchia. Il trattamento Teknowaterclean® rappresenta una vera e propria innovazione nell'industria tessile, le fibre che compongono il tessuto subiscono un trattamento protettivo molecolare che non permette allo sporco di infiltrarsi in profondità. La macchia, depositandosi quindi in superficie, potrà essere rimossa semplicemente con l'acqua!

Teknofibra is the classic polyester microfibre, laminated with a soft fleece that makes it suitable for all uses in home furnishings with excellent performance, and easy to clean thanks to the innovative stain-resistant treatment. The Teknowaterclean® treatment represents a real innovation in the textile industry. The fibres that make up the fabric undergo a molecular protective treatment that does not allow dirt to infiltrate deeply. The stain then settles on the surface and can be simply removed with water!

Composizione/Composition 100% Poliestere/Polyester
Peso/Weight 550±5% g/mq
Martindale (ISO 12947-1) 50.000 giri



Impermeabile
all'acqua
Water repellent



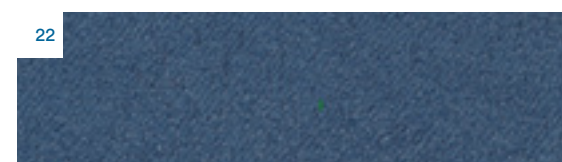
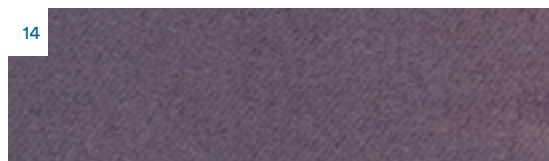
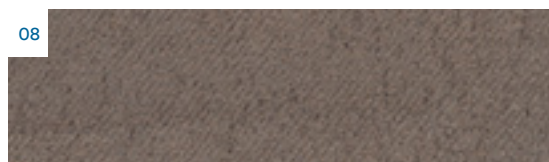
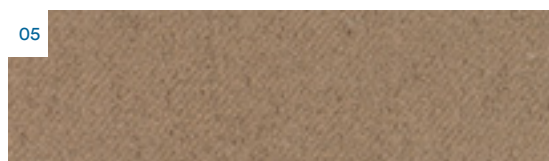
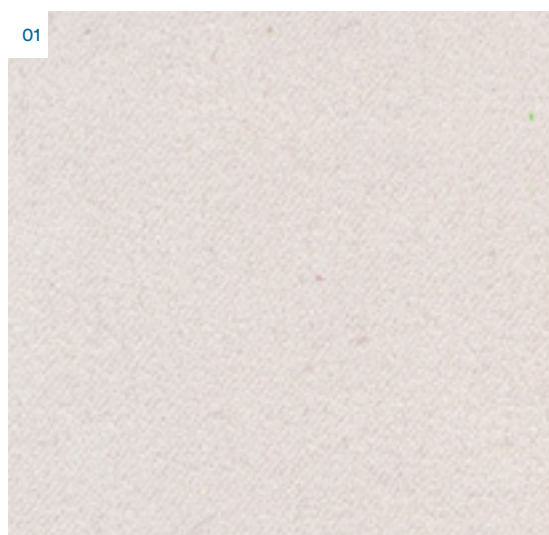
Resistente a
macchie di caffè
Resistant to
coffee stains



Resistente a
macchie di
bibite
Resistant to
drink stains

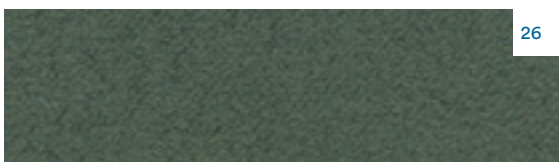


Resistente a
macchie oleose
Resistant to
oily stains

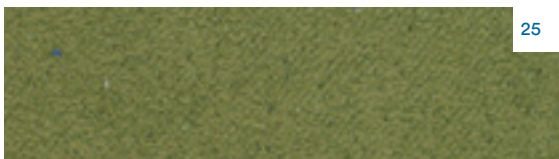


Il colore dei tessuti può leggermente variare in base alla fornitura.
 The color of fabrics may vary slightly depending on the supply

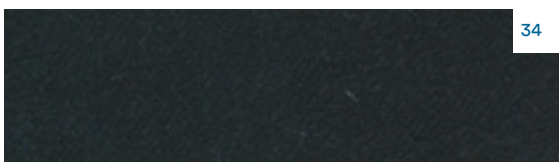




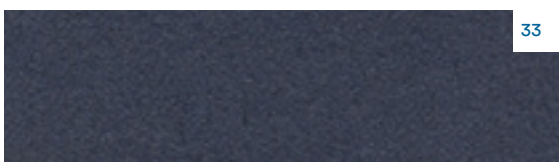
26



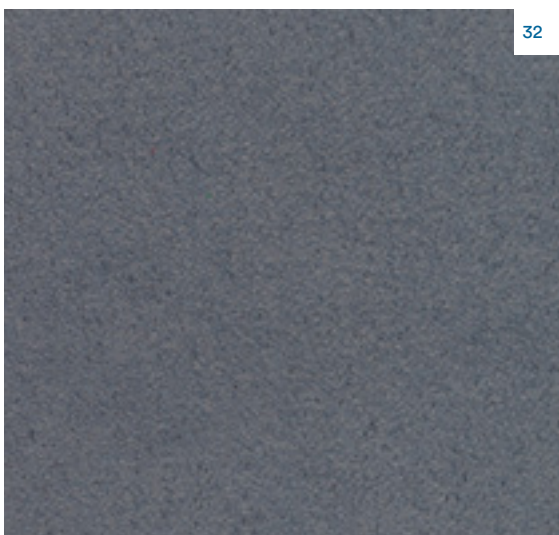
25



34



33



32





LAVARE A MANO | *HAND WASH*



NON LAVARE IN LAVATRICE | *DO NOT MACHINE WASH*



LAVARE MAX 30° | *WASH 30° MAX*



LAVARE MAX 40° | *WASH 40° MAX*



NON CANDEGGIARE | *DO NOT BLEACH*



NON UTILIZZARE L'ASCIUGATRICE | *DO NOT USE THE DRYER*



ASCIUGARE A BASSA TEMPERATURA | *DRY AT LOW TEMPERATURE*



ASCIUGARE A MEDIA TEMPERATURA | *DRY AT MEDIUM TEMPERATURE*



ASCIUGARE IN ORIZZONTALE | *LAY FLAT TO DRY*



ASCIUGARE IN VERTICALE | *DRY VERTICALLY*



LAVARE A SECCO ECCETTO TRICHLOROETILENE | *DRY CLEAN EXCEPT TRICHLOROETHYLENE*



NON LAVARE A SECCO | *DO NOT DRY CLEAN*



NON STIRARE | *DO NOT IRON*



STIRARE A BASSA TEMPERATURA | *LOW TEMPERATURE IRON*



STIRARE A MEDIA TEMPERATURA | *MEDIUM TEMPERATURE IRON*



STIRARE A ROVESCIO | *REVERSE IRON*



NON STRIZZARE | *DO NOT WRING*



NON ASCIUGARE AL SOLE | *DO NOT DRY IN THE SUN*

www.dreamlydesign.com





DREAMLY IS A BRAND BY ELETTOIDEA & MEF

Via dell'Industria, 33 | 37060 Sona, Verona | ITALY
Ph. +39 045 6082 365 | F. +39 045 6088 650

www.dreamlydesign.com | info@dreamlydesign.com