

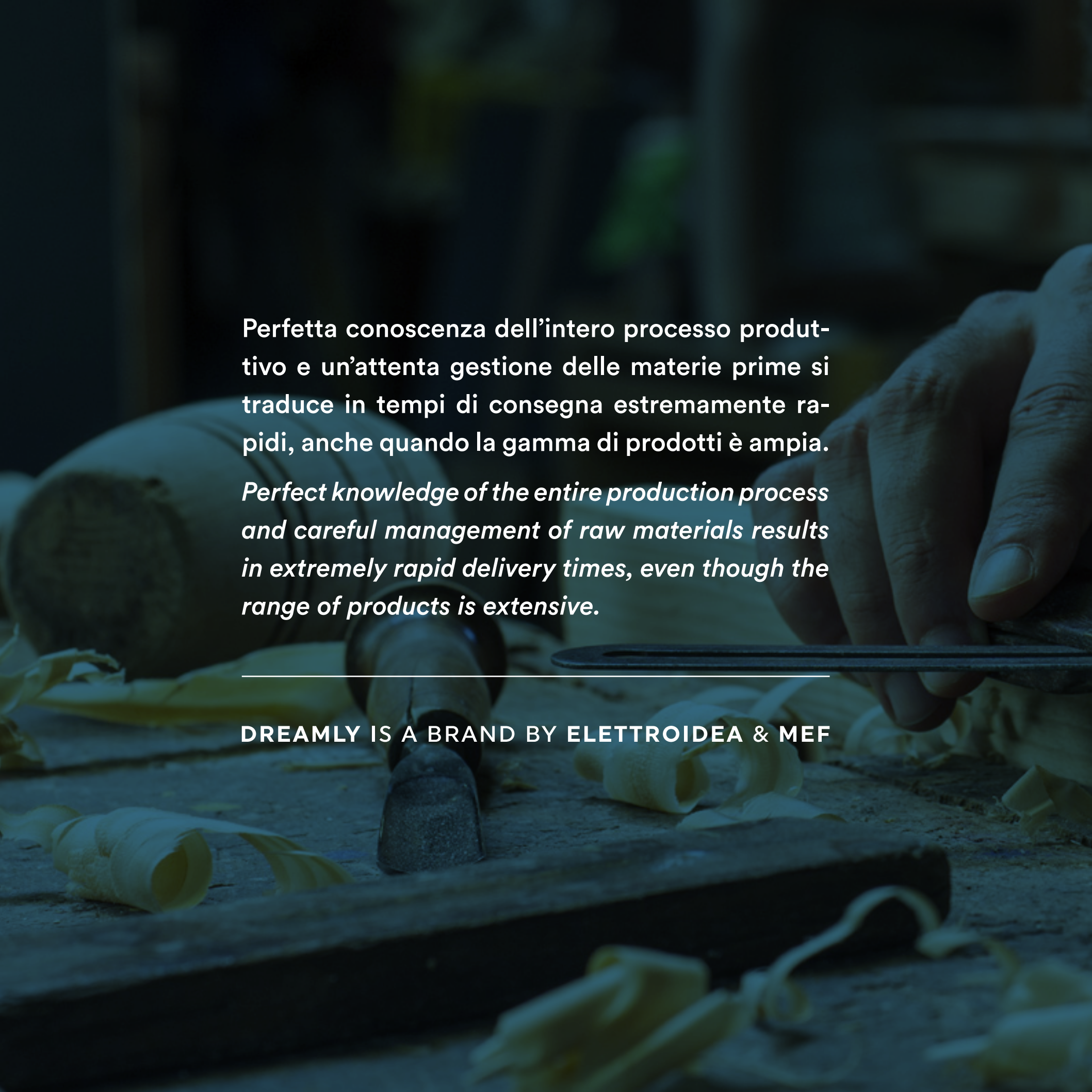


BEDS COLLECTION

# Collezione Letti







Perfetta conoscenza dell'intero processo produttivo e un'attenta gestione delle materie prime si traduce in tempi di consegna estremamente rapidi, anche quando la gamma di prodotti è ampia.

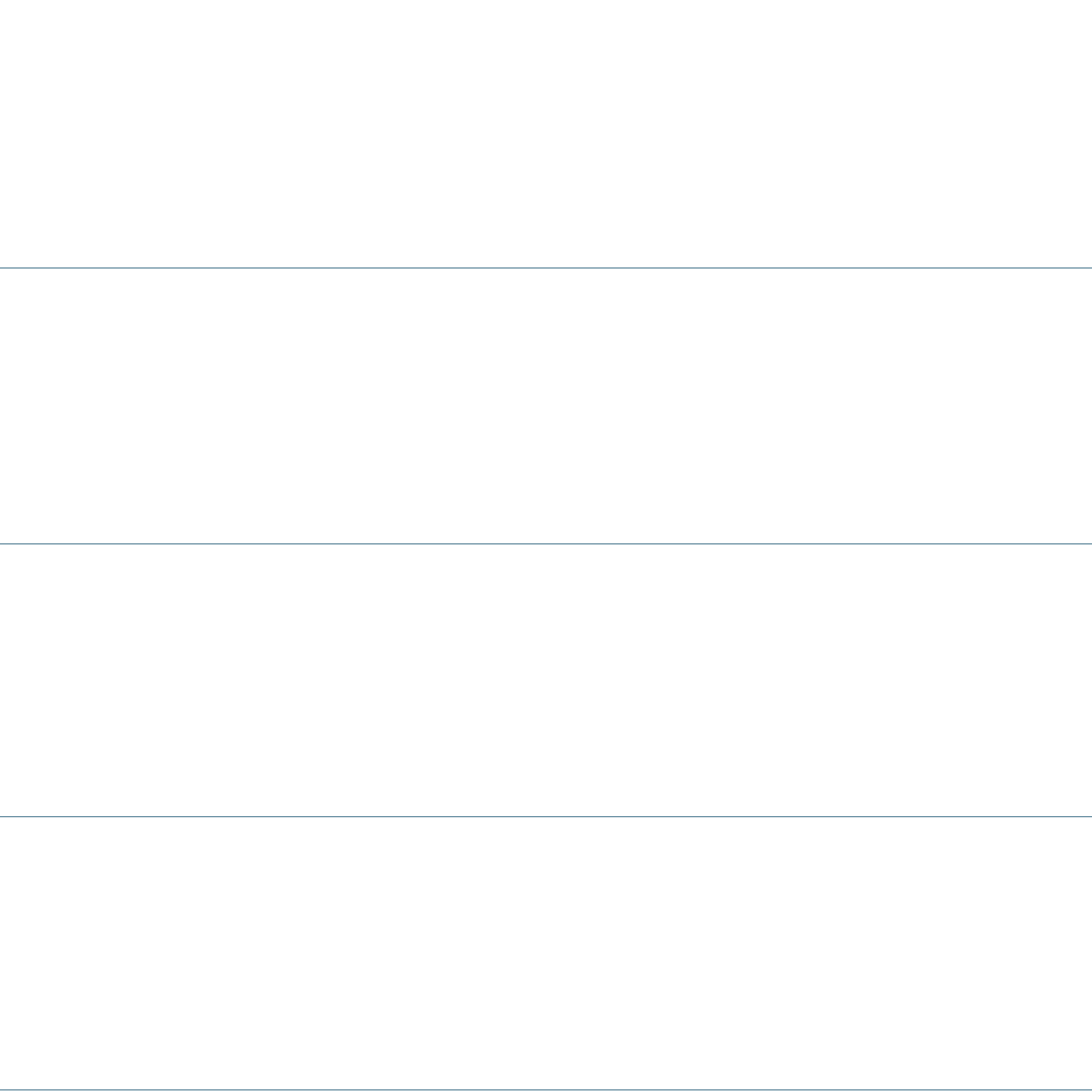
*Perfect knowledge of the entire production process and careful management of raw materials results in extremely rapid delivery times, even though the range of products is extensive.*

---

**DREAMLY IS A BRAND BY ELETTRIDEA & MEF**



**dreamily**<sup>®</sup>  
ITALIAN DESIGN FOR SLEEPING



Letti / *Beds*

**7**

LETTI / BEDS

Basi Letto / *Bed Bases*

**39**

BASI LETTO / BED BASES

Piedi / *Feet*

**45**

PIEDI / FEET

Tessuti / *Fabrics*

**51**

TESSUTI / FABRICS

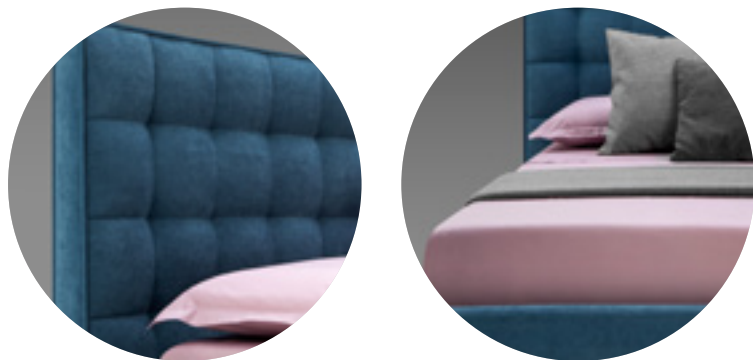




**LETTI**  
*BEDS*

# PASSION

Design: Dreamly Lab



**Dormire può diventare una passione.**  
***Sleep can be a passion.***

- Struttura multistrato classe E1, completamente imbottita
- Rivestimento della testiera non rimovibile, rivestimento rimovibile nella struttura del letto
- *Structure in multilayer class E1, completely upholstered*
- *Non-removable cover for the headboard, removable cover for the bed frame*

Tessuto/Fabric: **SAVOY 95** ⓘ pg.61  
(riferimento: immagine qui sotto) (see image below)





LETTI / BEDS

BASI LETTO / BED BASES

PIEDI / FEET

TESSUTI / FABRICS





# NICE

Design: Dreamly Lab



## La purezza nella forma. *Purity of design.*

- Struttura multistrato classe E1, completamente imbottita
- Rivestimento della testiera non rimovibile, rivestimento rimovibile nella struttura del letto
- *Structure in multilayer class E1, completely upholstered*
- *Non-removable cover for the headboard, removable cover for the bed frame*

Tessuto/Fabric: **ALASKA 20** ☉ pg.52



# EXCLUSIVE

Design: Dreamly Lab



**L'esclusività e la capacità dell'artigiano  
racchiuse nel letto dei tuoi sogni.  
*The exclusivity and skill of the craftsman  
enclosed in the bed of your dreams.***

- Struttura multistrato classe E1, completamente imbottita
- Rivestimento della testiera non rimovibile, rivestimento rimovibile nella struttura del letto
- *Structure in multilayer class E1, completely upholstered*
- *Non-removable cover for the headboard, removable cover for the bed frame*

Tessuto/Fabric: **GUS 06** ↻ pg. 56





LETTI / BEDS

BASI LETTO / BED BASES

PIEDI / FEET

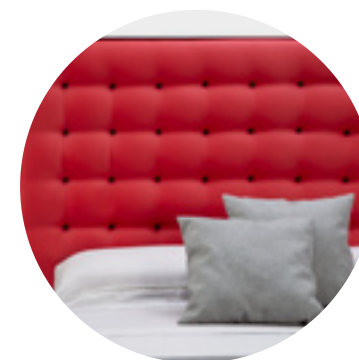
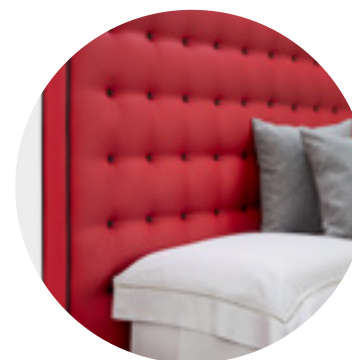
TESSUTI / FABRICS





# POINT

Design: Dreamly Lab



**Dormire non è solo un punto di arrivo ma anche un punto di partenza...**  
***Sleep is not only a point of arrival but also a point of departure....***

- Struttura multistrato classe E1, completamente imbottita
- Rivestimento della testiera non rimovibile, rivestimento rimovibile nella struttura del letto
- *Structure in multilayer class E1, completely upholstered*
- *Non-removable cover for the headboard, removable cover for the bed frame*

Tessuto/Fabric: **GUS 14** ⓘ pg. 56



# ELEGANT

Design: Dreamly Lab



**Linee eleganti e semplici per dare vita ai tuoi sogni speciali.**

***Elegant and simple lines to bring your special dreams to life.***

- Struttura multistrato classe E1, completamente imbottita
- Rivestimento della testiera non rimovibile, rivestimento rimovibile nella struttura del letto
- *Structure in multilayer class E1, completely upholstered*
- *Non-removable cover for the headboard, removable cover for the bed frame*

Tessuto/Fabric: **GUS 01** ↻ pg. 56









# MASSIVE

Design: Dreamly Lab



**Una forte personalità  
per assicurare le tue notti.  
*A strong personality to comfort your nights.***

- Struttura multistrato classe E1, completamente imbottita
- Rivestimento della testiera non rimovibile, rivestimento rimovibile nella struttura del letto
- *Structure in multilayer class E1, completely upholstered*
- *Non-removable cover for the headboard, removable cover for the bed frame*

Tessuto/Fabric: **SAVOY 94** ⓘ pg. 61



# SNUG

Design: Dreamly Lab



**Il piacere di coccolarti nei tuoi sogni.**  
***The pleasure of pampering you in your dreams.***

- Struttura multistrato classe E1, completamente imbottita
- Rivestimento della testiera non rimovibile, rivestimento rimovibile nella struttura del letto
- *Structure in multilayer class E1, completely upholstered*
- *Non-removable cover for the headboard, removable cover for the bed frame*

Tessuto/Fabric: **MARVEL 39** ⓘ pg. 60





LETTI / BEDS

BASI LETTO / BED BASES

PIEDI / FEET

TESSUTI / FABRICS







# SOFT

Design: Dreamly Lab



**La morbidezza dei tuoi sogni e del tuo letto insieme, per sempre.**  
*The softness of your dreams and your bed together, forever.*

- Struttura multistrato classe E1, completamente imbottita
- Rivestimento della testiera non rimovibile, rivestimento rimovibile nella struttura del letto
- *Structure in multilayer class E1, completely upholstered*
- *Non-removable cover for the headboard, removable cover for the bed frame*

Tessuto/Fabric: **MARVEL 126** ↻ pg. 60



# SENSE

Design: Dreamly Lab



**La piacevole sensazione del benessere.**  
***The pleasant sensation of wellness.***

- Struttura multistrato classe E1, completamente imbottita
- Rivestimento della testiera non rimovibile, rivestimento rimovibile nella struttura del letto
- *Structure in multilayer class E1, completely upholstered*
- *Non-removable cover for the headboard, removable cover for the bed frame*

Tessuto/Fabric: **CABAJO 05 CAMEL** ⓘ pg. 53





LETTI / BEDS

BASI LETTO / BED BASES

PIEDI / FEET

TESSUTI / FABRICS





# KIND

Design: Dreamly Lab



**La leggerezza che avvolge i tuoi sogni.  
The lightness that envelops your dreams.**

- Struttura multistrato classe E1, completamente imbottita
- Rivestimento della testiera non rimovibile, rivestimento rimovibile nella struttura del letto
- *Structure in multilayer class E1, completely upholstered*
- *Non-removable cover for the headboard, removable cover for the bed frame*

Tessuto/Fabric: **NEWBRONX 10 OCEAN** → pg. 62



# HONESTY

Design: Dreamly Lab



**Le linee che cullano il tuo sonno.**  
***The lines that lull your sleep.***

- Struttura multistrato classe E1, completamente imbottita
- Rivestimento della testiera non rimovibile, rivestimento rimovibile nella struttura del letto
- *Structure in multilayer class E1, completely upholstered*
- *Non-removable cover for the headboard, removable cover for the bed frame*

Tessuto/Fabric: **ATLANTIC 21 DARK GREY** ⓘ pg. 54





LETTI / BEDS

BASI LETTO / BED BASES

PIEDI / FEET

TESSUTI / FABRICS

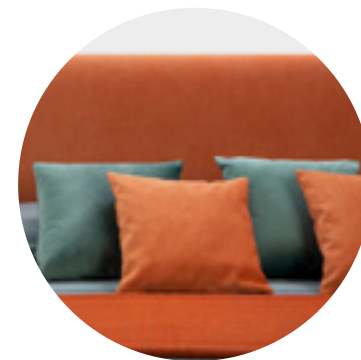






# GENEROUS

Design: Dreamly Lab



**Dormi coccolato dalla morbidezza.  
Sleep cuddled in softness.**

- Struttura multistrato classe E1, completamente imbottita
- Rivestimento della testiera non rimovibile, rivestimento rimovibile nella struttura del letto
- *Structure in multilayer class E1, completely upholstered*
- *Non-removable cover for the headboard, removable cover for the bed frame*

Tessuto/Fabric: **MARVEL 36** ☉ pg. 60



# HARMONIC

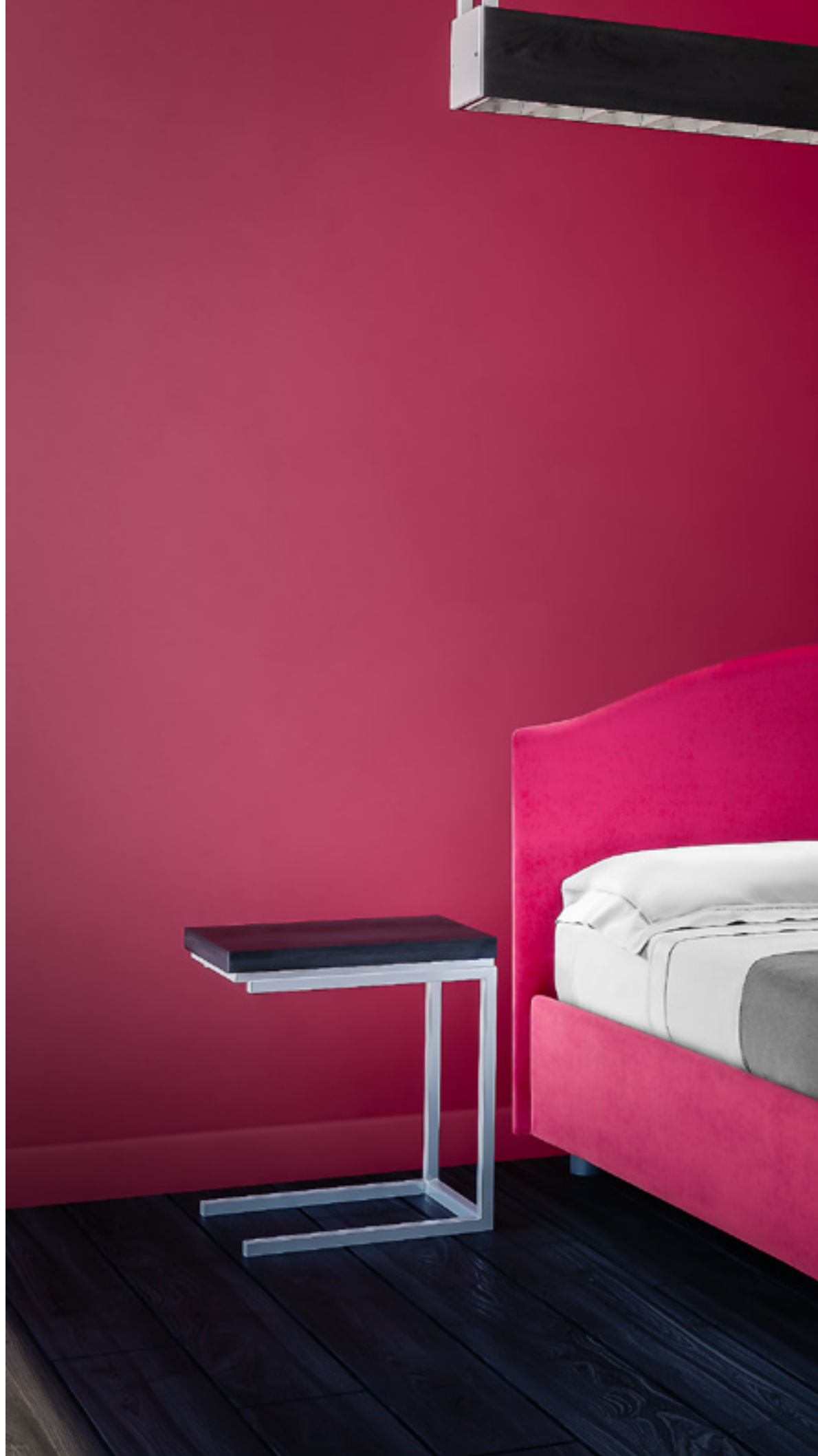
Design: Dreamly Lab



**L'armonia del riposo: le dolci curve  
che coccolano i tuoi sogni.**  
*The harmony of rest: the gentle curves  
that cuddle your dreams.*

- Struttura multistrato classe E1, completamente imbottita
- Rivestimento della testiera non rimovibile, rivestimento rimovibile nella struttura del letto
- *Structure in multilayer class E1, completely upholstered*
- *Non-removable cover for the headboard, removable cover for the bed frame*

Tessuto/Fabric: LOUVRE 27 WINE ☺ pg. 58





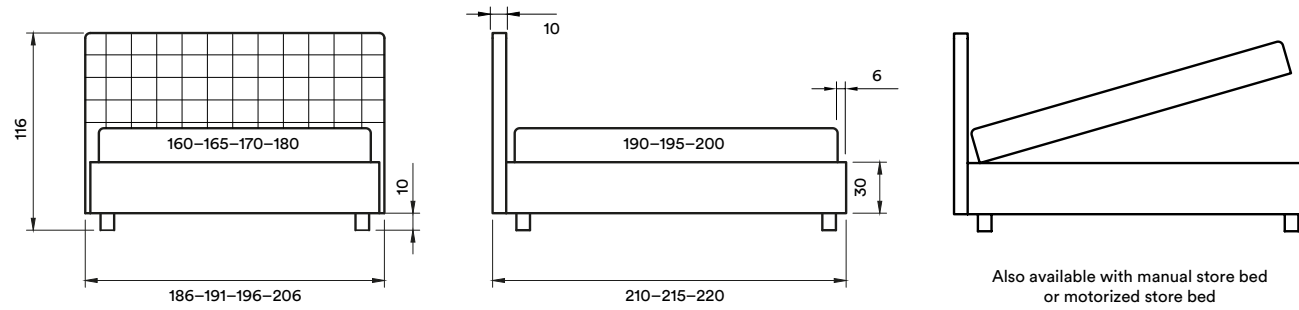
LETTI / BEDS

BASI LETTO / BED BASES

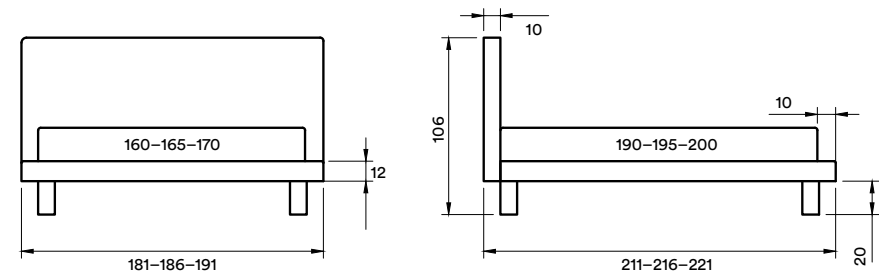
PIEDI / FEET

TESSUTI / FABRICS

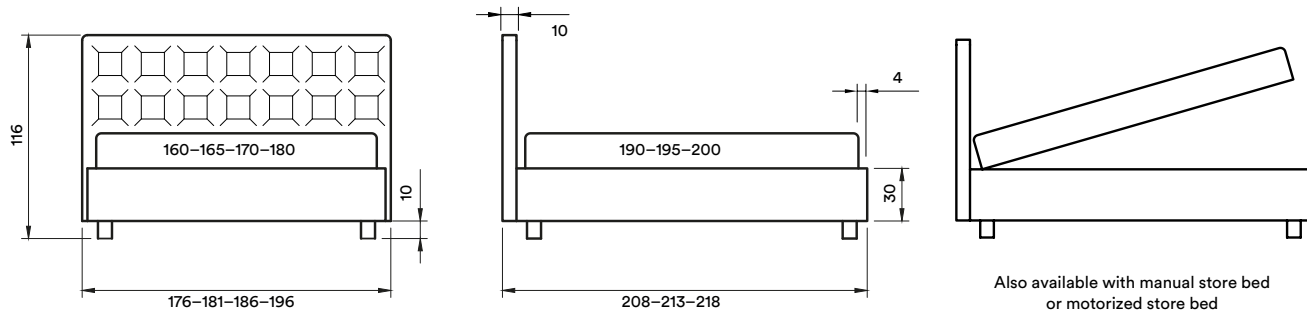
## PASSION



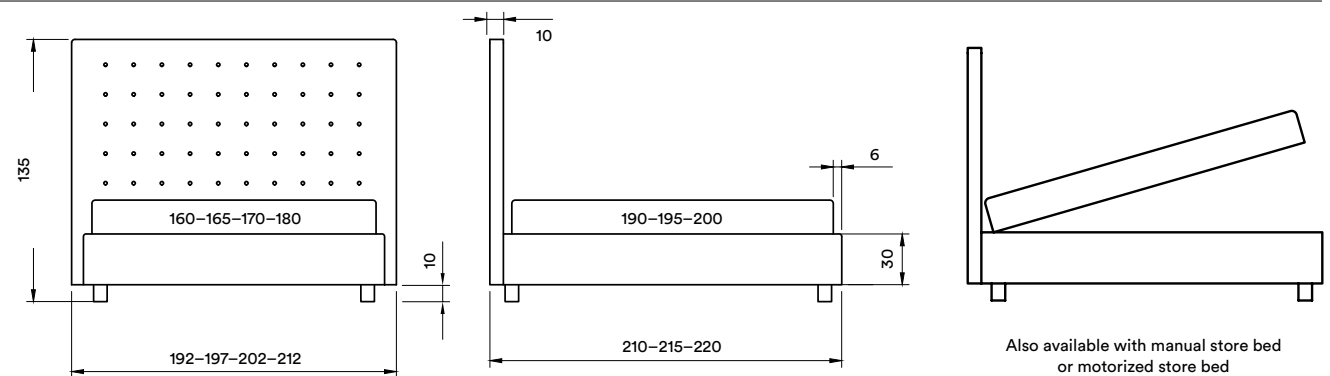
## NICE



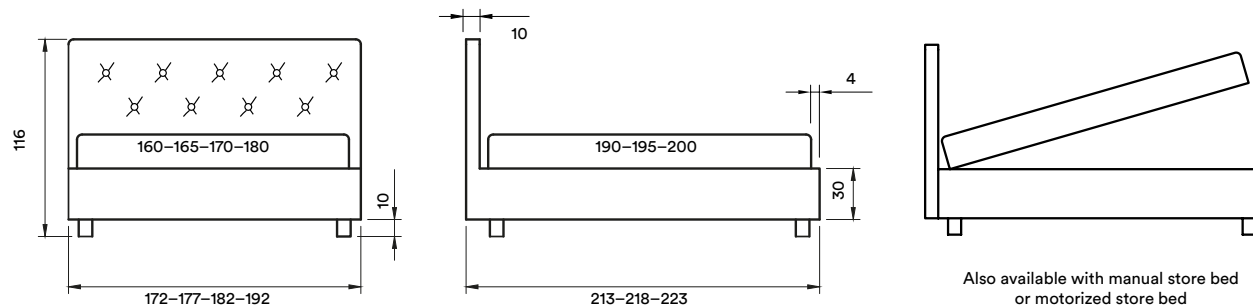
## EXCLUSIVE



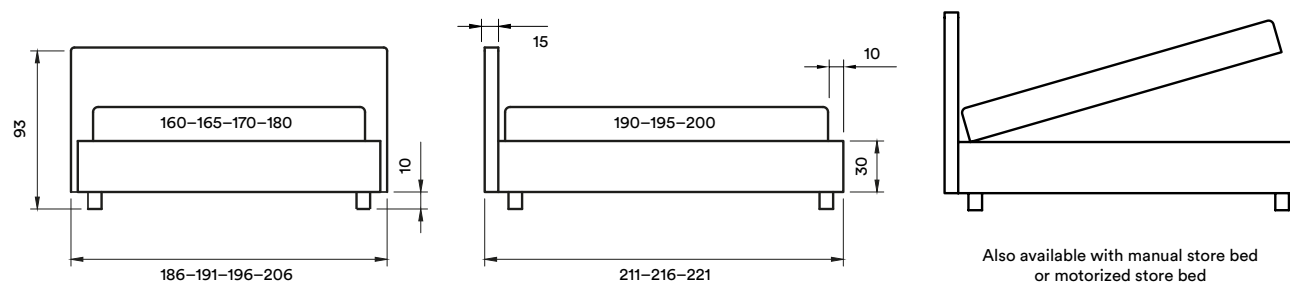
## POINT



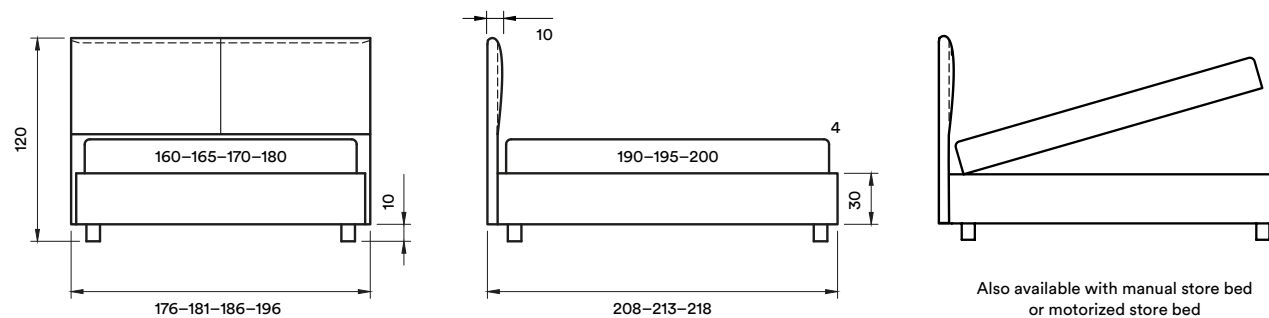
## ELEGANT



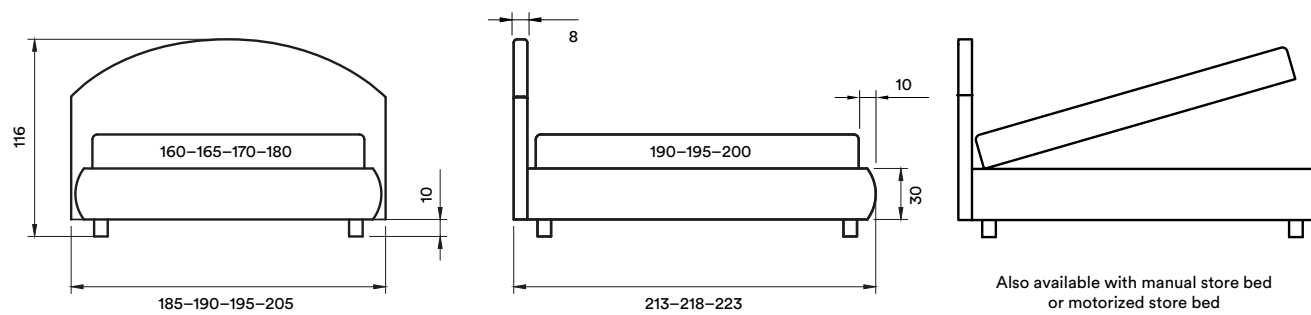
## MASSIVE



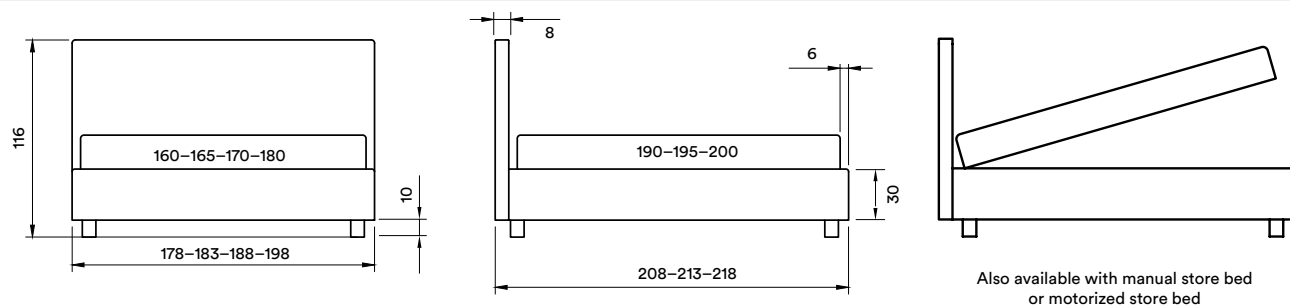
## SNUG



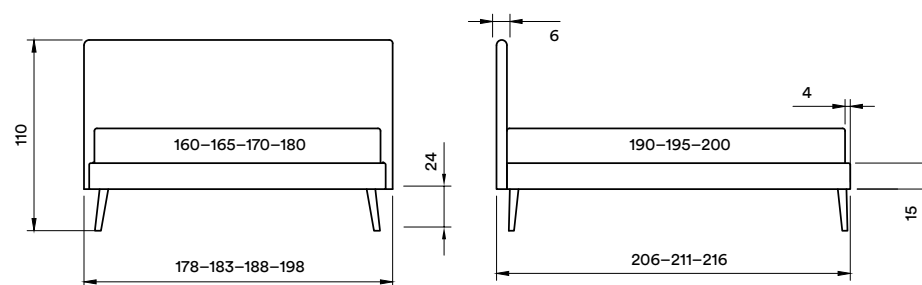
## SOFT



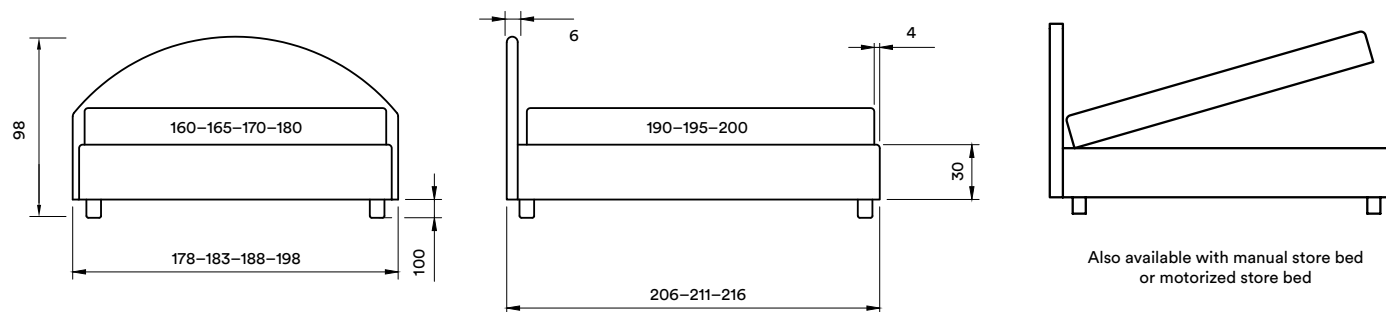
## SENSE



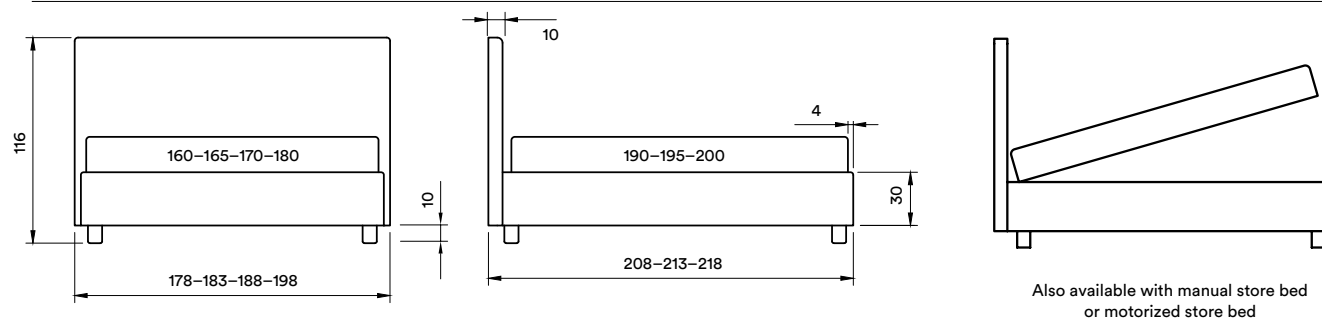
## KIND



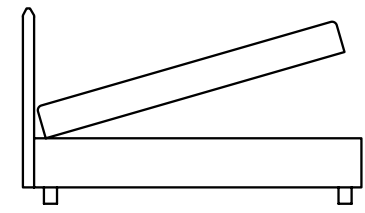
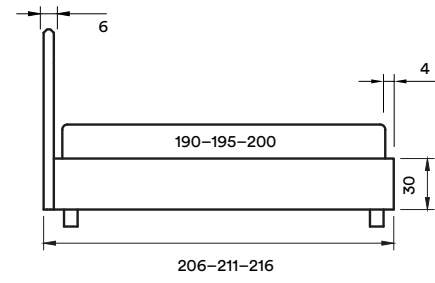
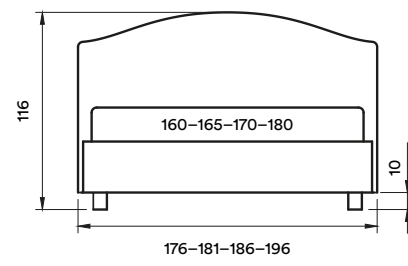
## HONESTY



## GENEROUS



## HARMONIC



Also available with manual store bed  
or motorized store bed





**BASI LETTO**  
*BED BASES*



**D-MOTION** è la base orientabile che permette di regolare la testa e i piedi del materasso, in modo da trovare il livello perfetto di comfort e sostegno. È possibile sincronizzare due basi o controllare il letto con il telecomando o con uno smartphone. Dormire con un comfort eccezionalmente ottimale che solo una base regolabile può fornire. Lavorare più comodamente con un portatile regolando la testa e/o i piedi del materasso.

*D-Motion adjustable foundation allows you to adjust the head and foot of your mattress, so you can find the perfect level of comfort and support. It is possible to synchronize two foundation or control the motion bed with the remote control or a smartphone. Sleep with exceptionally optimized comfort that only an adjustable foundation can provide. Work more comfortably on your laptop or handheld device by adjusting the head and/or foot of the mattress.*

D-Motion ha una solida struttura in compensato, schiumato e rivestimenti in tessuto con velcro in modo che i rivestimenti siano tutti sfoderabili. Molteplici soluzioni per le testate. Soluzione di nuova concezione per il motore: molto robusto e silenzioso. Fino a 240 kg.

*D-Motion has a solid plywood structure, foamed and fabric covers with velcro so the fabric covers are all removable. Many solutions for the headboards. New concept solution for the motor: very strong and silent. Up to 240 kg.*

Tessuto/Fabric: **SAVOY 94** → pg. 59





# E-MOTION

LETTI / BEDS

BASI LETTO / BED BASES

PIEDI / FEET

TESSUTI / FABRICS



**E-MOTION è la base orientabile che permette di regolare la testa e i piedi del materasso, in modo da trovare il livello perfetto di comfort e sostegno. È possibile sincronizzare due basi o controllare il letto con il telecomando o con uno smartphone. Dormire con un comfort eccezionalmente ottimale che solo una base regolabile può fornire. Lavorare più comodamente con un portatile regolando la testa e/o i piedi del materasso.**

*E-Motion adjustable foundation allows you to adjust the head and foot of your mattress, so you can find the perfect level of comfort and support. It is possible to synchronize two foundation or control the motion bed with the remote control or a smartphone. Sleep with exceptionally optimized comfort that only an adjustable foundation can provide. Work more comfortably on your laptop or handheld device by adjusting the head and/or foot of the mattress.*

E-Motion ha una solida struttura in compensato, schiumato e rivestimenti in tessuto con velcro in modo che i rivestimenti siano tutti sfoderabili. Molteplici soluzioni per le testate. Soluzione di nuova concezione per il motore: molto robusto e silenzioso. Fino a 240 kg.

*E-Motion has a solid plywood structure, foamed and fabric covers with velcro so the fabric covers are all removable. Many solutions for the headboards. New concept solution for the motor: very strong and silent. Up to 240 kg.*

Tessuto/Fabric: **MARVEL 126** → pg. 58



# SLATTED SOMMIER



**Nuovo design che include i vantaggi della rete a doghe e la praticità del sommier. Un letto finito pronto per l'uso. Telaio in legno rivestito in schiuma e tessuto. Doghe in faggio multistrato. Nella zona centrale è possibile regolare la rigidità. Nella zona delle spalle le doghe sono di 25x8 mm per aumentare la flessibilità per ottimizzare il comfort.**

*New design that includes the advantages of the slatted frame and the practicality of the sommie. A finished bed ready for use. Wooden frame covered in foam and fabric. Multilayer beech slats. In the central zone you can also adjust the firmness. In the shoulder zone the slats are 25x8 mm to increase flexibility to optimise comfort*

1. Gambe in faggio massiccio  
*Legs in massive beech*
2. Possibilità di fissare la testata  
*Possibility to attach the headboard*
3. Altezza del telaio 15 cm  
*Height of the frame 15 cm*

Tessuto/Fabric: GUS 22 → pg. 54

# FLAT SOMMIER



**Base letto dal design minimale, perfetto per le camere da letto informali e dallo stile moderno. Telaio in legno rivestito in schiuma e tessuto. Piano a doghe in legno / piano rigido/ piano molleggiato, possibilità di ampia scelta dei rivestimenti.**

*Bed base with a minimalist design, perfect for informal, modern-style bedrooms. Wooden frame covered in foam and fabric. Wooden slatted top/rigid top/ spring top, large choice of coverings.*

1. Gambe in faggio massiccio  
*Legs in massive beech*
2. Possibilità di fissare la testata  
*Possibility to attach the headboard*
3. Altezza del telaio 22 cm  
*Height of the frame 22 cm*

Tessuto/Fabric: **GUS 05** → pg. 54



**PIEDI**  
*FEET*



WOODEN  
CUBIC



PLASTIC  
ROUNDED



WOODEN  
CLASSIC



IRON  
CHROMED





WOODEN  
PYRAMIDAL



WOODEN  
ANGULAR



WOODEN  
LARGE  
ANGULAR



WOODEN  
SQUARE

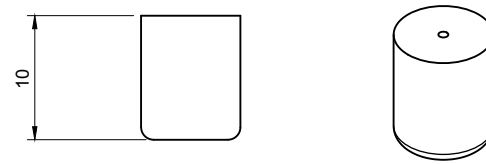
WOODEN CUBIC

---



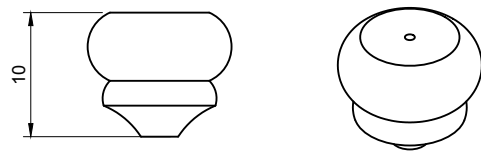
ROUNDED PLASTIC

---



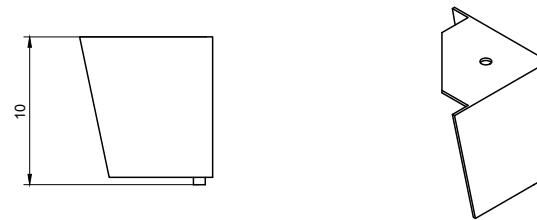
WOODEN CLASSIC

---



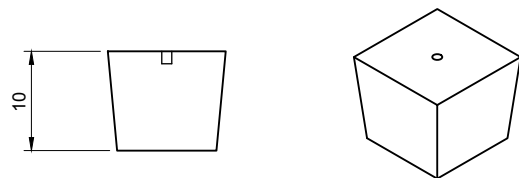
CHROMED IRON

---



WOODEN PYRAMIDAL

---



ANGULAR WOODEN

---



LARGE ANGULAR WOODEN

---



WOODEN SQUARE

---







**TESSUTI**  
*FABRICS*

# ALASKA

La particolarità del tessuto Alaska sta nel suo aspetto simile al peluche, avvolgente e caldo è l'ideale per la produzione di letti e sommier dal confort assicurato.

*The particularity of the Alaska fabric lies in its plush-like appearance, enveloping and warm, it is ideal for the production of beds and sommieres with guaranteed comfort.*

**Composizione/Composition** 92% Poliestere/Polyester  
8% Nylon

**Peso/Weight** 350±5% g/mq

**Martindale (ISO 12947-1)** 60.000 giri



Impermeabile  
all'acqua  
*Water repellent*



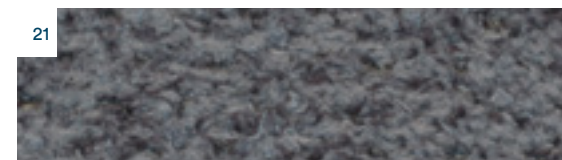
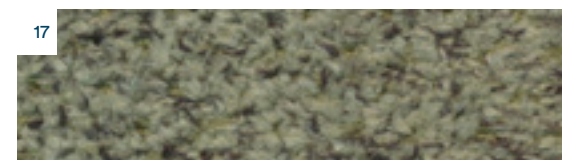
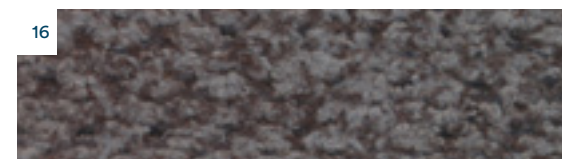
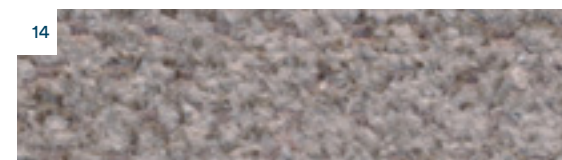
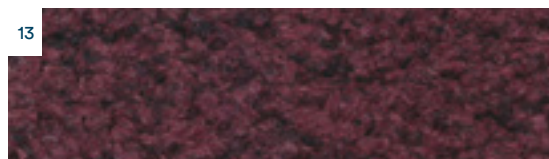
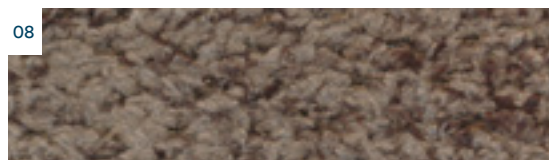
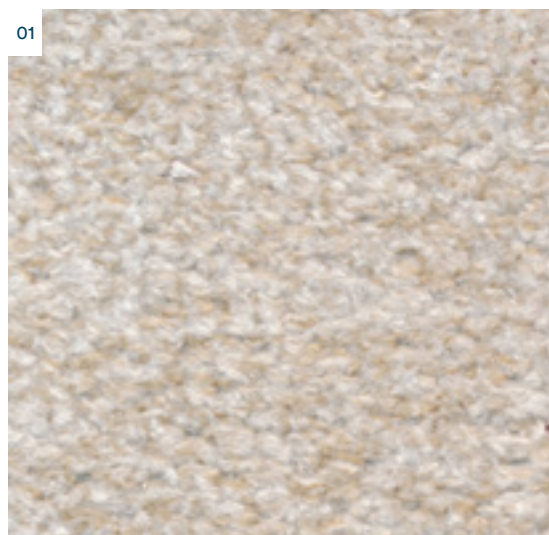
Resistente a  
macchie di caffè  
*Resistant to  
coffee stains*



Resistente a  
macchie di  
bibite  
*Resistant to  
drink stains*

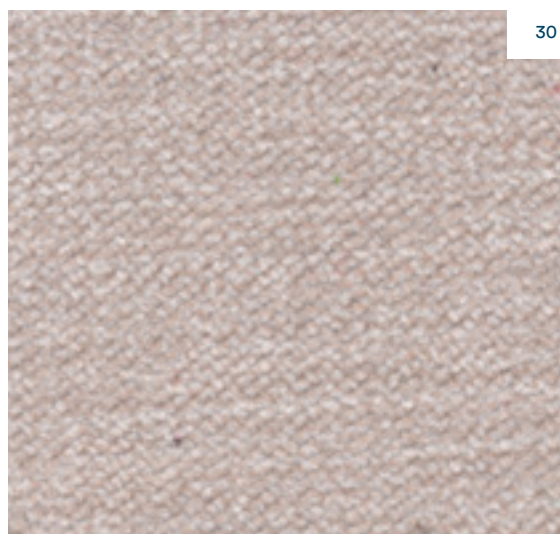


Resistente a  
macchie oleose  
*Resistant to  
oily stains*



Il colore dei tessuti può leggermente variare in base alla fornitura.  
*The color of fabrics may vary slightly depending on the supply*





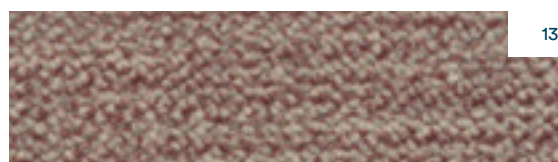
30



35



36



13



11



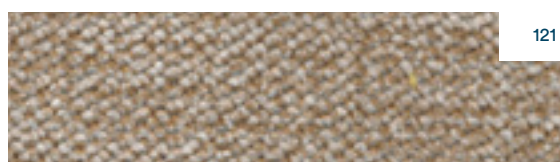
126



127



39



121



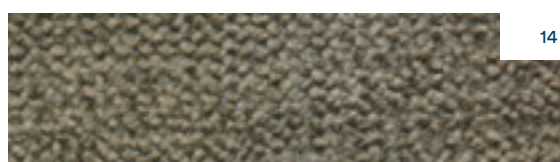
37



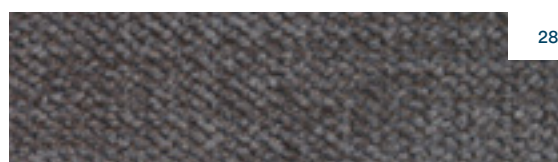
34



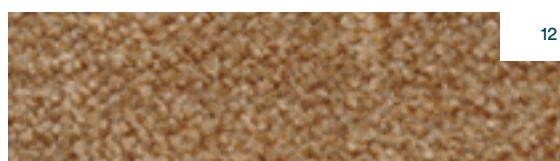
38



14



28



12

Marvel è un'evoluzione delle microfibre e dei tessuti smacchiabili. E' un tessuto più resistente delle normali microfibre a cui è stato applicato un particolare trattamento che permette alle macchie liquide di scivolare via e a quelle secche di essere facilmente asportate con acqua e sapone.

*Marvel is an evolution of microfibres and stainable fabrics. It is a fabric that is more resistant than normal microfibres and has been given a special treatment that allows liquid stains to slide off and dry stains to be easily removed with soap and water.*

**Composizione/Composition** 90% Poliestere/Polyester  
10% Cotone/Cotton

**Peso/Weight** 500±5% g/ml

**Martindale (ISO 12947-1)** 40.000 giri



Impermeabile  
all'acqua  
*Water repellent*



Resistente a  
macchie di caffè  
*Resistant to  
coffee stains*



Resistente a  
macchie di  
bibite  
*Resistant to  
drink stains*



Resistente a  
macchie oleose  
*Resistant to  
oily stains*



Resistenza  
all'usura  
*Resistance to  
wear*



Trattamento  
anallergico  
*Hypoallergenic  
treatment*



Trattamento  
antibatterico  
*Antibacterial  
treatment*



Testato  
resistente a 30  
lavaggi  
*Tested treatment  
resistant to 30  
washes*



Il colore dei tessuti può leggermente variare in base alla fornitura.  
*The color of fabrics may vary slightly depending on the supply*

# ATLANTIC

Microfibra per rivestimenti d'arredo con effetto tessile, molto sottile. Il trattamento Stain Resistant rende Atlantic resistente ai liquidi e adatto ad ogni tipo di letto.

*Microfibre for upholstery with textile effect, very thin. Stain Resistant treatment makes Atlantic resistant to liquids and suitable for all types of bedding*

**Composizione/Composition** 100% Poliestere/Polyester

**Peso/Weight** 520±5% g/mq

**Martindale (ISO 12947-1)** 80.000 giri



Impermeabile  
all'acqua  
*Water repellent*



Resistente a  
macchie di caffè  
*Resistant to  
coffee stains*



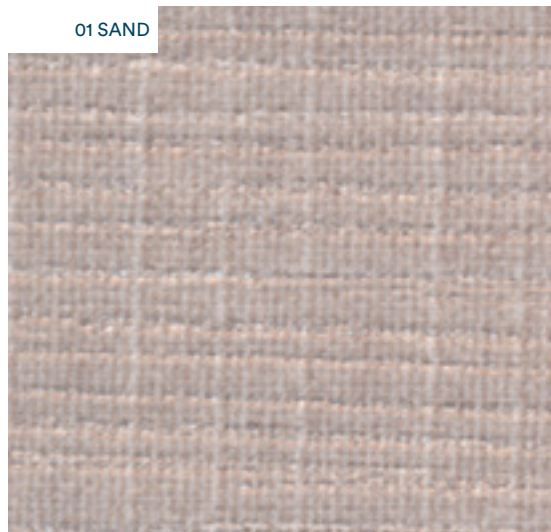
Resistente a  
macchie di  
bibite  
*Resistant to  
drink stains*



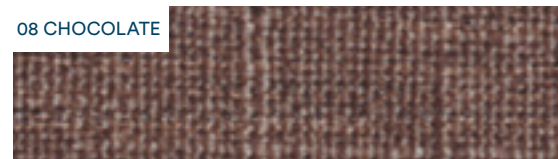
Resistente a  
macchie oleose  
*Resistant to  
oily stains*



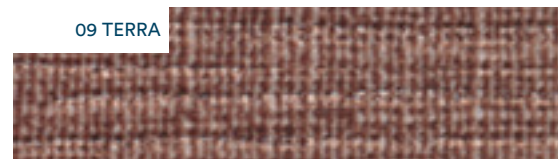
01 SAND



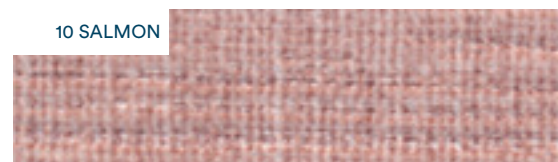
08 CHOCOLATE



09 TERRA



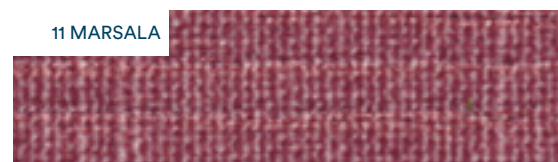
10 SALMON



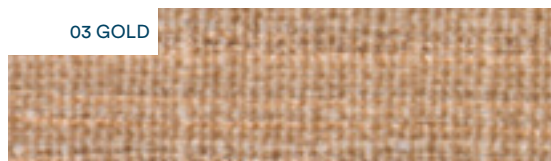
02 ALMOND



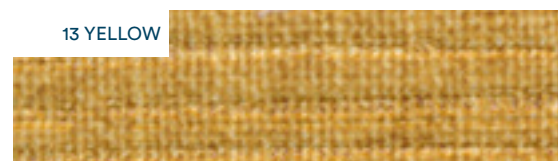
11 MARSALA



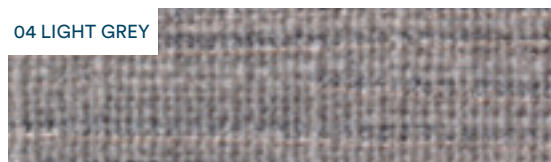
03 GOLD



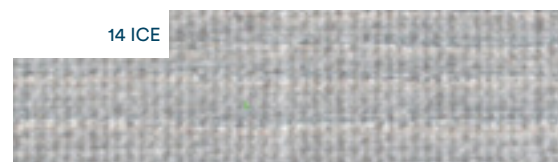
13 YELLOW



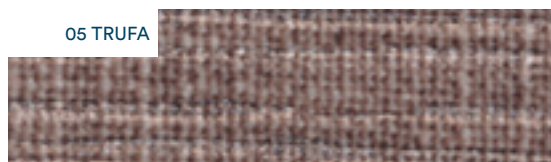
04 LIGHT GREY



14 ICE



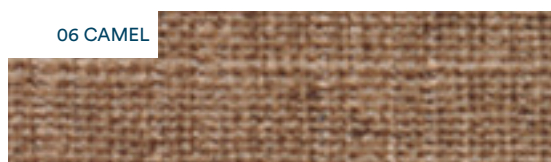
05 TRUFA



15 EMERALD



06 CAMEL



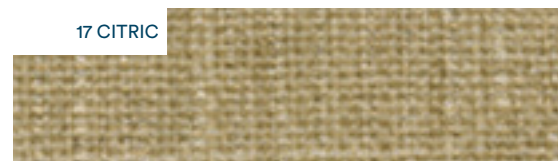
16 SKY



07 MOUSE



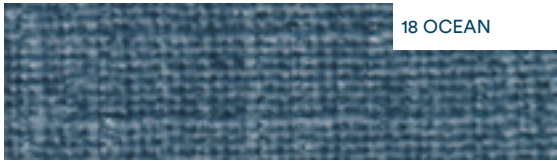
17 CITRIC



Il colore dei tessuti può leggermente variare in base alla fornitura.  
*The color of fabrics may vary slightly depending on the supply*







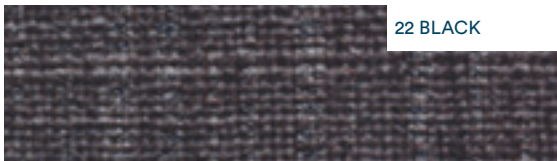
18 OCEAN



19 LAVANDA



20 MUD



22 BLACK



21 DARK GREY

# GUS

Il tessuto GUS è composto al 100% di poliestere ma il finish poliuretano superficiale dona una mano e un look riconducibile alla finta pelle ma con la facilità di manutenzione di un tessuto dalle ottime qualità antitaglio e antigraffio e di facile pulizia

*The GUS fabric is composed of 100 per cent polyester, but the surface polyurethane finish gives it a hand and look reminiscent of imitation leather, but with the easy-care qualities of a fabric with excellent cut-resistant and scratch-resistant qualities and easy-care*

**Composizione/Composition** 100% Poliestere/Polyester  
**Peso/Weight** 360±5% g/mq  
**Martindale (ISO 12947-1)** 40.000 giri



Impermeabile  
all'acqua  
Water repellent



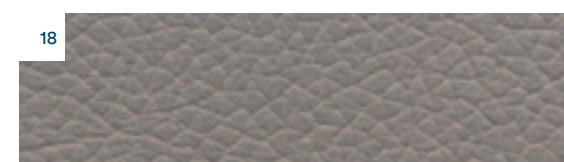
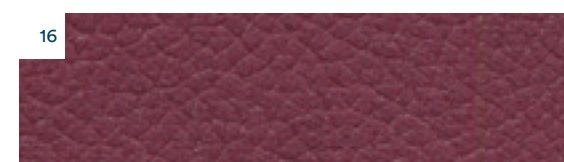
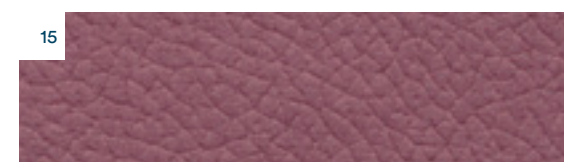
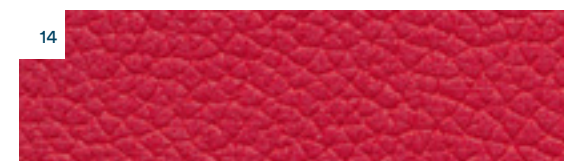
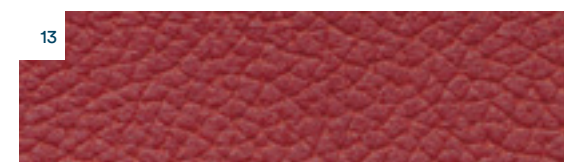
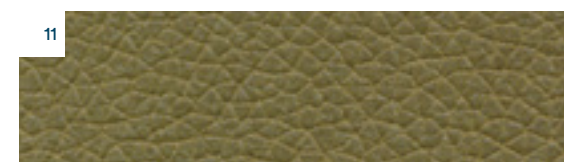
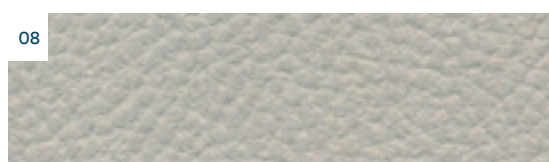
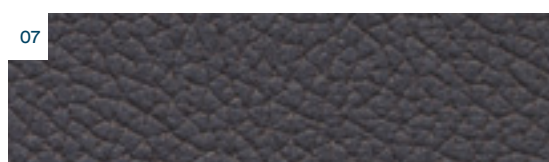
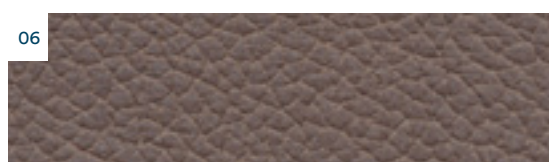
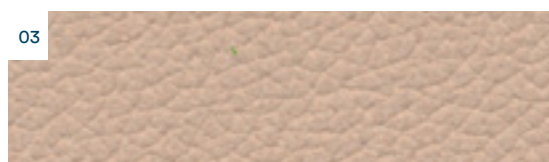
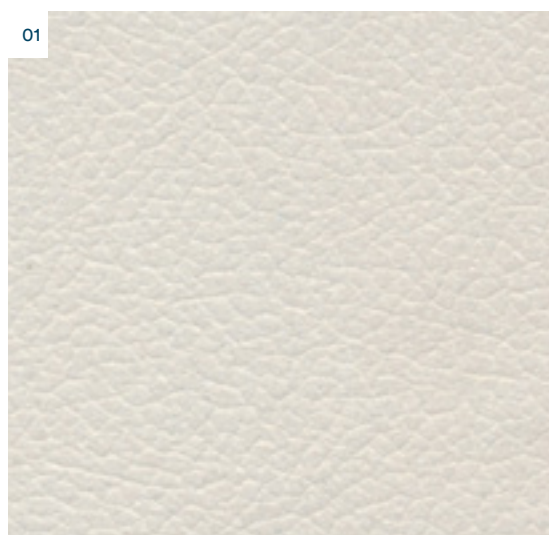
Resistente a  
macchie di caffè  
Resistant to  
coffee stains



Resistente a  
macchie di  
bibite  
Resistant to  
drink stains

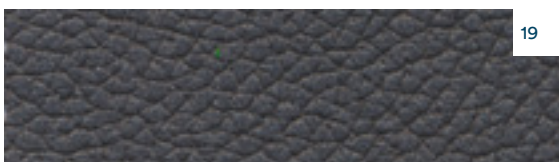


Resistente a  
macchie oleose  
Resistant to  
oily stains



Il colore dei tessuti può leggermente variare in base alla fornitura.  
*The color of fabrics may vary slightly depending on the supply*





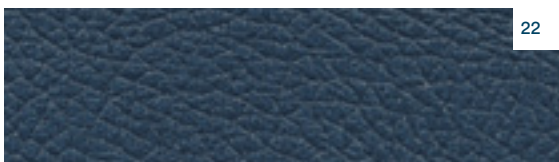
19



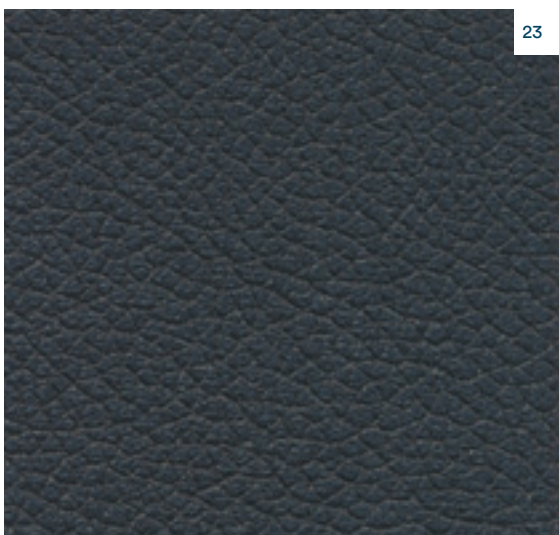
20



21



22



23

# LOUVRE

Louvre è il velluto classico per eccellenza, capace di adattarsi a diversi stili e a combinamenti per ottenere un ambiente raffinato e contemporaneo. Presenta una mano vellutata, soffice, e morbida al tatto con una brillantezza elevata.

*Louvre is the classic velvet par excellence, capable of adapting to different styles and combinations to achieve a refined and contemporary ambience. It has a velvety, soft touch with a high lustre.*

<b>Composizione/Composition</b>	100% Poliestere/Polyester
<b>Peso/Weight</b>	520±5% g/mq
<b>Martindale (ISO 12947-1)</b>	100.000 giri



Impermeabile  
all'acqua  
*Water repellent*



Resistente a  
macchie di caffè  
*Resistant to  
coffee stains*



Resistente a  
macchie di  
bibite  
*Resistant to  
drink stains*



Resistente a  
macchie oleose  
*Resistant to  
oily stains*



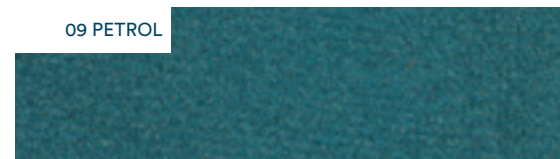
01 LIGHT BLUE



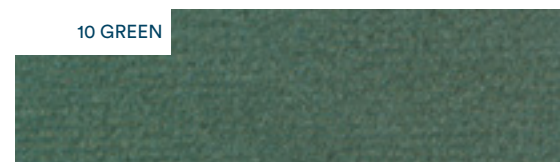
08 DEEP BLUE



09 PETROL



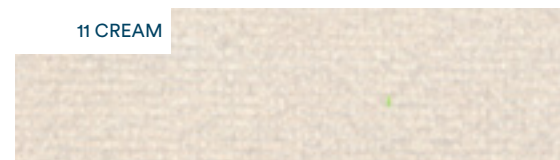
10 GREEN



02 SAFIRA



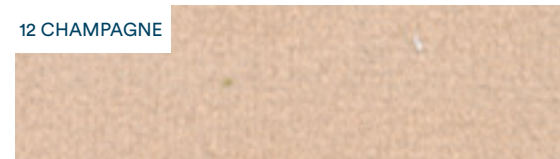
11 CREAM



03 STEEL



12 CHAMPAGNE



04 TURQUOISE



13 BEIGE



05 LIMA



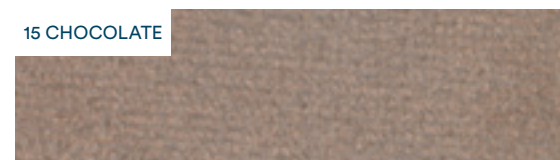
14 KHAKI



06 OCEAN



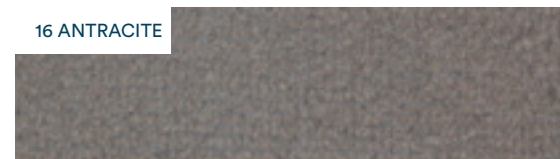
15 CHOCOLATE



07 FOREST



16 ANTRACITE

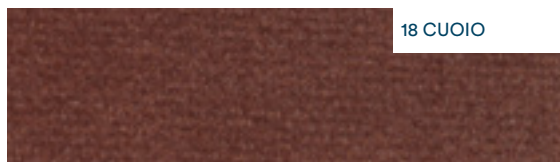


Il colore dei tessuti può leggermente variare in base alla fornitura.  
*The color of fabrics may vary slightly depending on the supply*





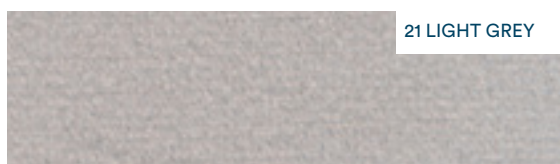
17 BRICK



18 CUOIO



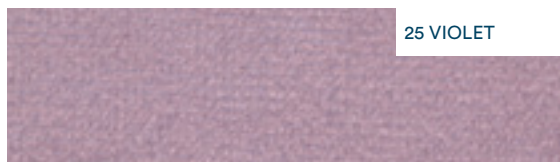
19 TEJA



21 LIGHT GREY



23 SALMON



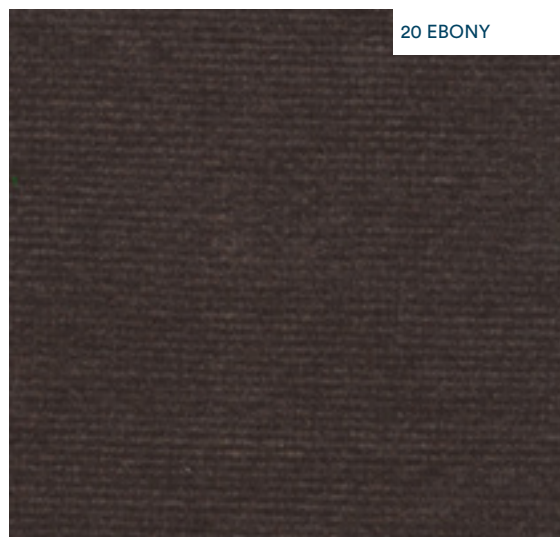
25 VIOLET



27 WINE



29 PURPLE



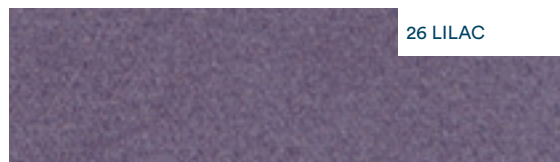
20 EBONY



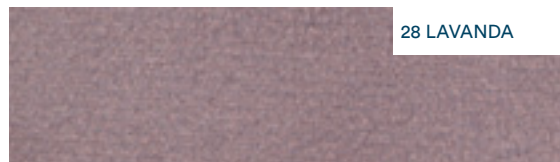
22 PINK



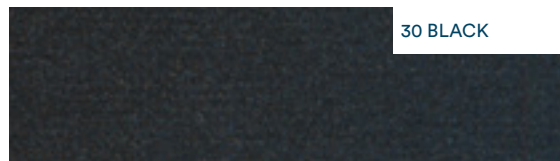
24 DEEP RED



26 LILAC



28 LAVANDA



30 BLACK

# NEW BRONX

New Bronx è un tessuto per rivestimenti d'arredo con mano ciniglia. Il trattamento idrorepellente (Stain Resistant) e la vasta colorazione lo rendono la scelta giusta per chi cerca praticità, morbidezza senza rinunciare allo stile. La ciniglia è un tessuto elastico molto morbido con un effetto lucido, quasi cangiante.

*New Bronx is a chenille-handle upholstery fabric. Its water-repellent treatment (Stain Resistant) and wide colour range make it the right choice for those seeking practicality, softness without sacrificing style. Chenille is a very soft stretch fabric with a shiny, almost iridescent effect.*

**Composizione/Composition** 100% Poliestere/Polyester  
**Peso/Weight** 426±5% g/mq  
**Martindale (ISO 12947-1)** 20.000 giri



Impermeabile  
all'acqua  
*Water repellent*



Resistente a  
macchie di caffè  
*Resistant to  
coffee stains*



Resistente a  
macchie di  
bibite  
*Resistant to  
drink stains*



Resistente a  
macchie oleose  
*Resistant to  
oily stains*



01 BEIGE



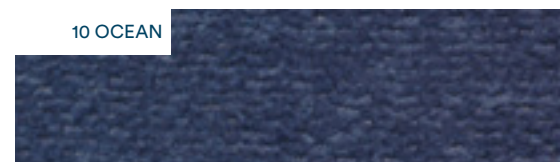
08 BROWN



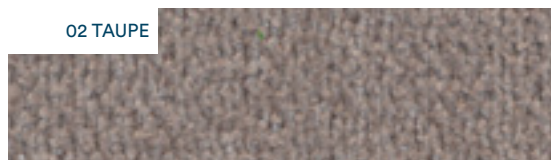
09 BLACK



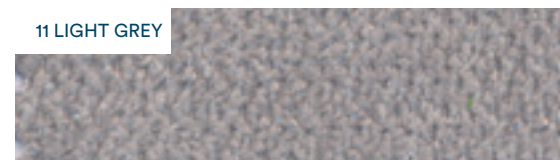
10 OCEAN



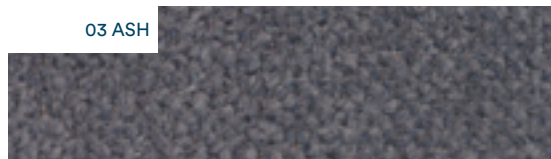
02 TAUPE



11 LIGHT GREY



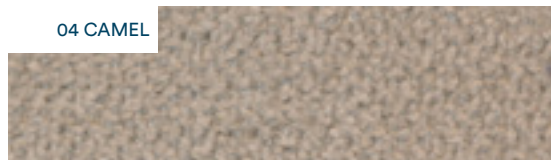
03 ASH



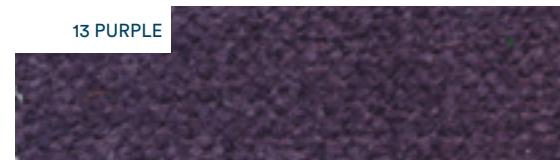
12 JEANS



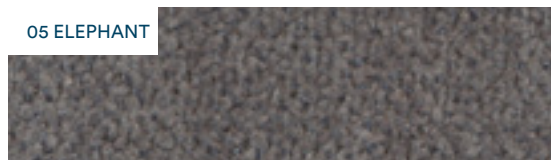
04 CAMEL



13 PURPLE



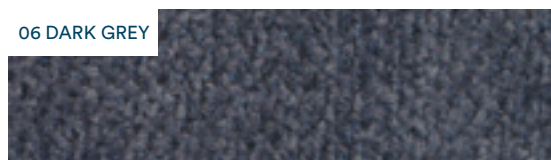
05 ELEPHANT



14 YELLOW



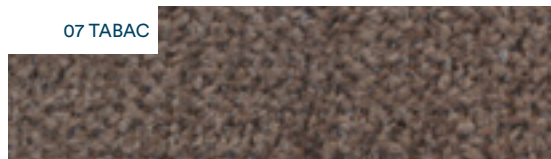
06 DARK GREY



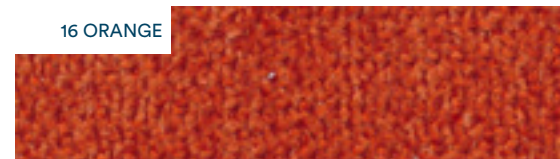
15 MOSTAZA



07 TABAC



16 ORANGE



Il colore dei tessuti può leggermente variare in base alla fornitura.  
*The color of fabrics may vary slightly depending on the supply*





17 MOSS



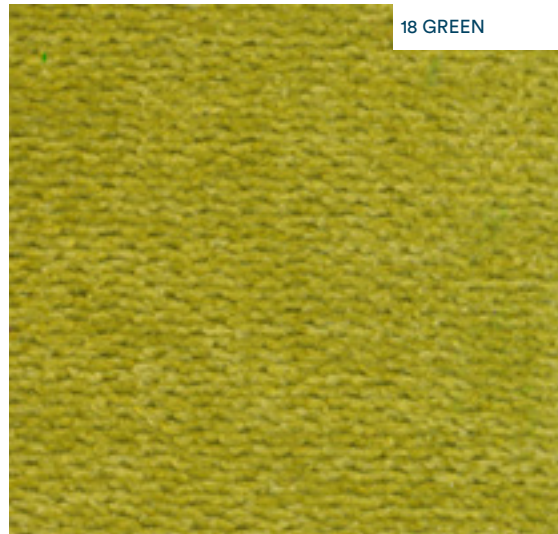
19 BORDEAUX



20 WATER GREEN



21 TURQUOISE



18 GREEN



22 PETROL

# TEKNOFIBRA

Teknofibra è la classica microfibra di poliestere, accoppiata con un morbido pile che la rende adatta a tutti gli usi nell'ambito dell'arredo casa con una resa eccellente, e facile da pulire grazie all'innovativo trattamento antimacchia. Il trattamento Teknowaterclean® rappresenta una vera e propria innovazione nell'industria tessile, le fibre che compongono il tessuto subiscono un trattamento protettivo molecolare che non permette allo sporco di infiltrarsi in profondità. La macchia, depositandosi quindi in superficie, potrà essere rimossa semplicemente con l'acqua!

*Teknofibra is the classic polyester microfibre, laminated with a soft fleece that makes it suitable for all uses in home furnishings with excellent performance, and easy to clean thanks to the innovative stain-resistant treatment. The Teknowaterclean® treatment represents a real innovation in the textile industry. The fibres that make up the fabric undergo a molecular protective treatment that does not allow dirt to infiltrate deeply. The stain then settles on the surface and can be simply removed with water!*

**Composizione/Composition** 100% Poliestere/Polyester  
**Peso/Weight** 550±5% g/mq  
**Martindale (ISO 12947-1)** 50.000 giri



Impermeabile  
all'acqua  
Water repellent



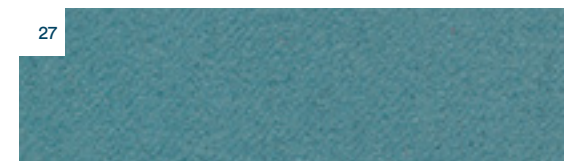
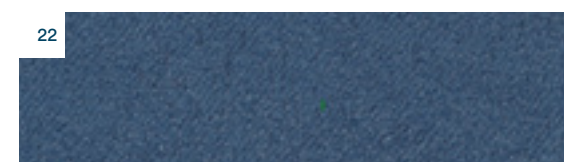
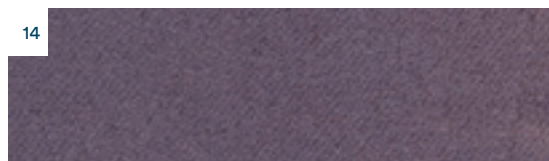
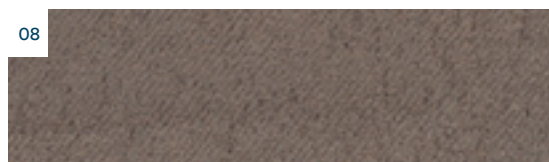
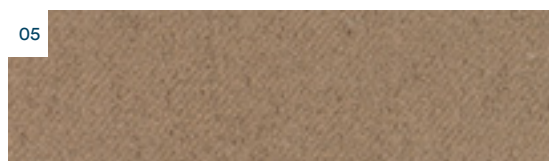
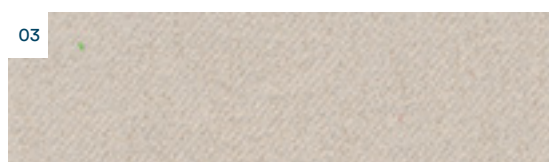
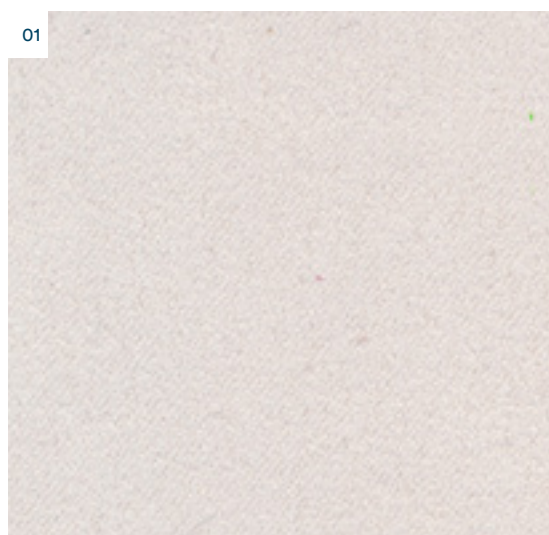
Resistente a  
macchie di caffè  
Resistant to  
coffee stains



Resistente a  
macchie di  
bibite  
Resistant to  
drink stains

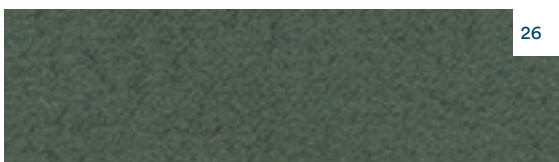


Resistente a  
macchie oleose  
Resistant to  
oily stains

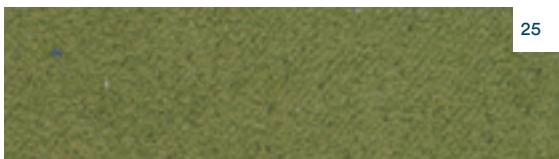


Il colore dei tessuti può leggermente variare in base alla fornitura.  
 The color of fabrics may vary slightly depending on the supply

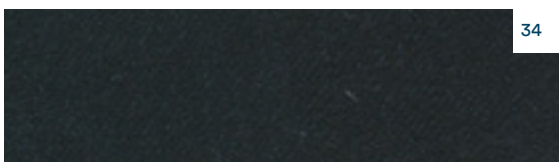




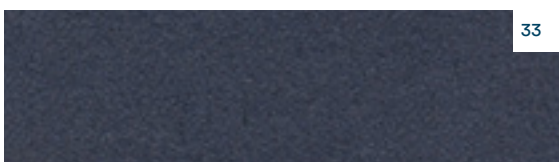
26



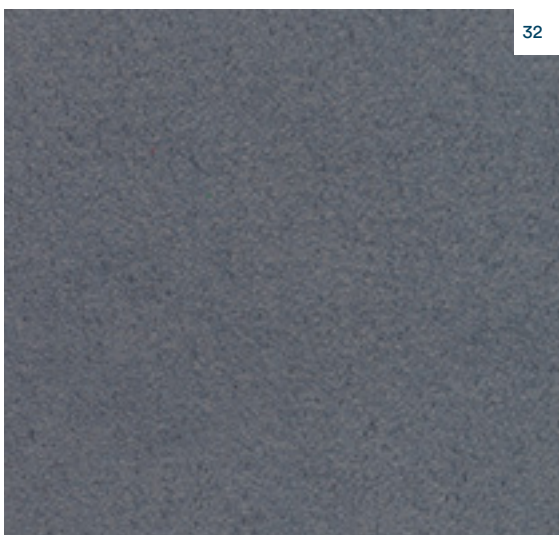
25



34



33



32

# SAVOY

Savoy è un tessuto di moderna concezione, piacevole al tatto e molto resistente all'usura ed all'abrasione. La caratteristica principale del tessuto Savoy è la sua totale impermeabilità all'acqua: è infatti garantito come "water repellent".

*Savoy is a modern fabric, pleasant to the touch and very resistant to wear and abrasion.*

*The main characteristic of Savoy fabric is its total impermeability to water: it is guaranteed as "water repellent".*

**Composizione/Composition** 89% Poliestere/Polyester  
8% Poliammide/Polyamide  
2% Cotone/Cotton  
1% Viscosa/Viscose

**Peso/Weight** 550±2% g/ml  
**Martindale (ISO 12947-1)** 40.000 giri



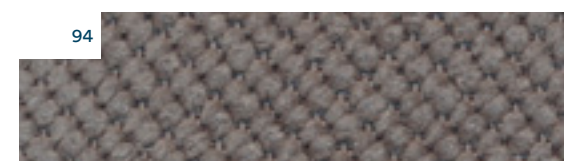
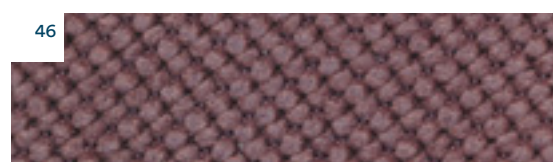
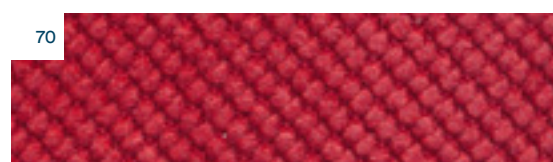
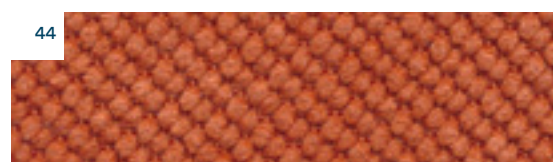
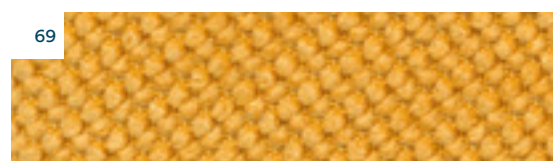
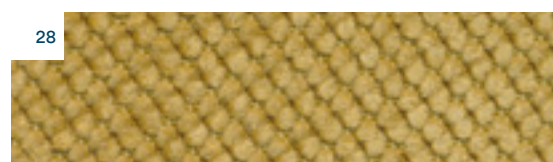
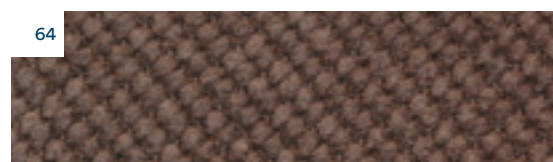
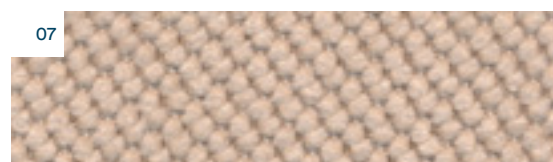
Impermeabile  
all'acqua  
*Water repellent*



Resistente a  
macchie di caffè  
*Resistant to  
coffee stains*



Resistente a  
macchie di  
bibite  
*Resistant to  
drink stains*



Il colore dei tessuti può leggermente variare in base alla fornitura.  
*The color of fabrics may vary slightly depending on the supply*







LAVARE A MANO | *HAND WASH*



NON LAVARE IN LAVATRICE | *DO NOT MACHINE WASH*



LAVARE MAX 30° | *WASH 30° MAX*



LAVARE MAX 40° | *WASH 40° MAX*



NON CANDEGGIARE | *DO NOT BLEACH*



NON UTILIZZARE L'ASCIUGATRICE | *DO NOT USE THE DRYER*



ASCIUGARE A BASSA TEMPERATURA | *DRY AT LOW TEMPERATURE*



ASCIUGARE A MEDIA TEMPERATURA | *DRY AT MEDIUM TEMPERATURE*



ASCIUGARE IN ORIZZONTALE | *LAY FLAT TO DRY*



ASCIUGARE IN VERTICALE | *DRY VERTICALLY*



LAVARE A SECCO ECCETTO TRICHLOROETILENE | *DRY CLEAN EXCEPT TRICHLOROETHYLENE*



NON LAVARE A SECCO | *DO NOT DRY CLEAN*



NON STIRARE | *DO NOT IRON*



STIRARE A BASSA TEMPERATURA | *LOW TEMPERATURE IRON*



STIRARE A MEDIA TEMPERATURA | *MEDIUM TEMPERATURE IRON*



STIRARE A ROVESCIO | *REVERSE IRON*



NON STRIZZARE | *DO NOT WRING*



NON ASCIUGARE AL SOLE | *DO NOT DRY IN THE SUN*

[www.dreamlydesign.com](http://www.dreamlydesign.com)







DREAMLY IS A BRAND BY ELETTOIDEA & MEF

Via dell'Industria, 33 | 37060 Sona, Verona | ITALY

Ph. +39 045 6082 365 | F. +39 045 6088 650

[www.dreamlydesign.com](http://www.dreamlydesign.com) | [info@dreamlydesign.com](mailto:info@dreamlydesign.com)